



UIC SUSTAINABILITY
LOWNOISEPAD Annex A
Graphic Reference Guide for SBB

October 2023



INTERNATIONAL UNION
OF RAILWAYS

Citation style

International Union of Railways (UIC), Sustainability, *LOWNOISEPAD Annex A: Graphic Reference Guide for SBB*, 2023.

ISBN 978-2-7461-3312-9

Warning

No part of this publication may be copied, reproduced or distributed by any means whatsoever, including electronic, except for private and individual use, without the express permission of the International Union of Railways (UIC). The same applies for translation, adaptation or transformation, arrangement or reproduction by any method or procedure whatsoever. The sole exceptions - noting the author's name and the source - are "analyses and brief quotations justified by the critical, argumentative, educational, scientific or informative nature of the publication into which they are incorporated" (Articles L 122-4 and L122-5 of the French Intellectual Property Code).

© International Union of Railways (UIC) - Paris, 2023

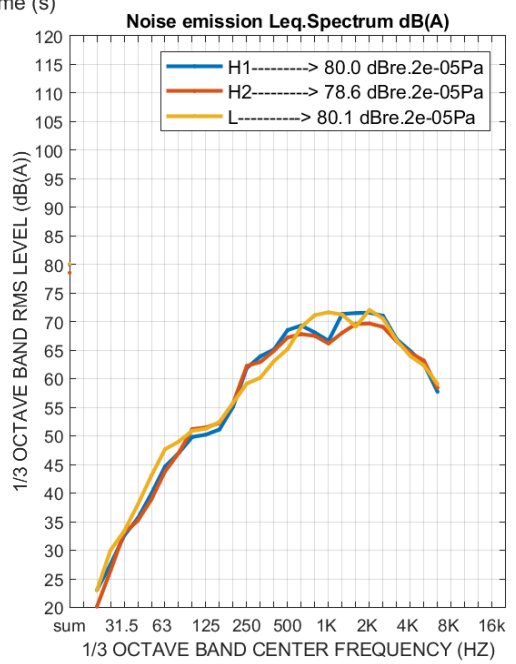
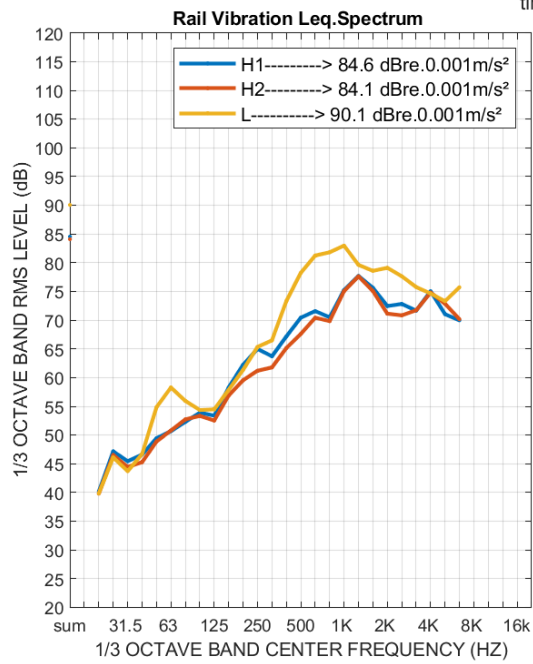
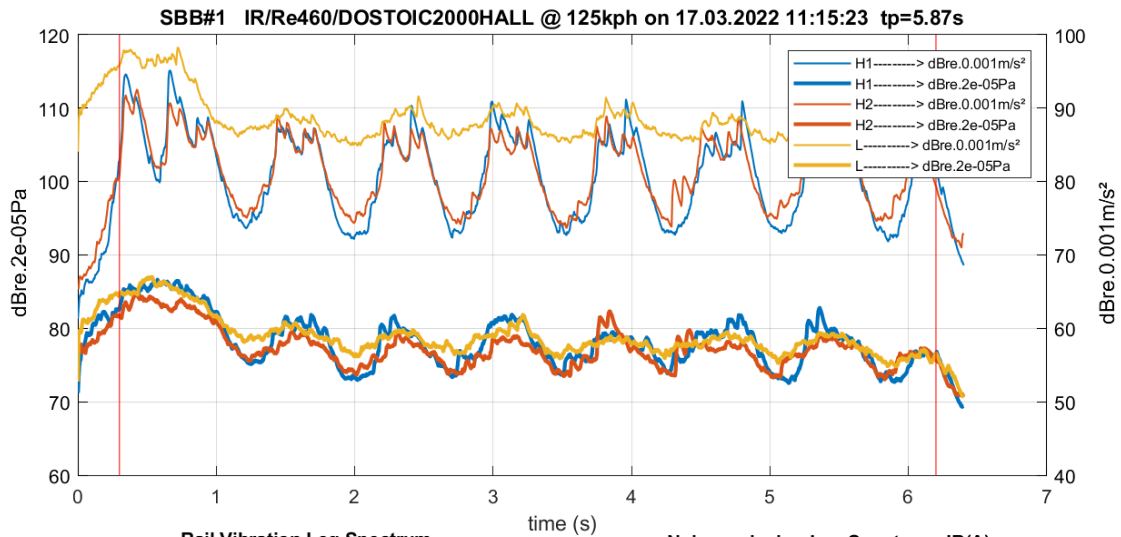
This annex, provided in a separate document, gives a detailed and graphic overview of the pass by data collected from each project member throughout the project. All results showing the noise reduction and detailed pass-by analysis, calculated on the basis of the data available in the LOWNOISEPAD software tool, are shown in a graph format for each type of rolling stock, given in an individual section for each PP (alongside Chapter 7 of this report). This annex should be used alongside the information gathered as part of the project carried out by UIC and the 12 project participants. It is not recommended to carry out analysis without first having reviewed the LOWNOISEPAD final report and the **Annex B**, and also without consulting and receiving authorisation from the project participants and UIC.

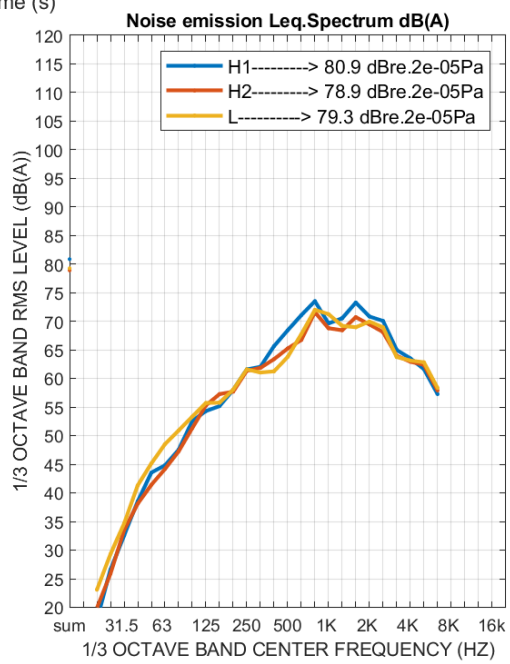
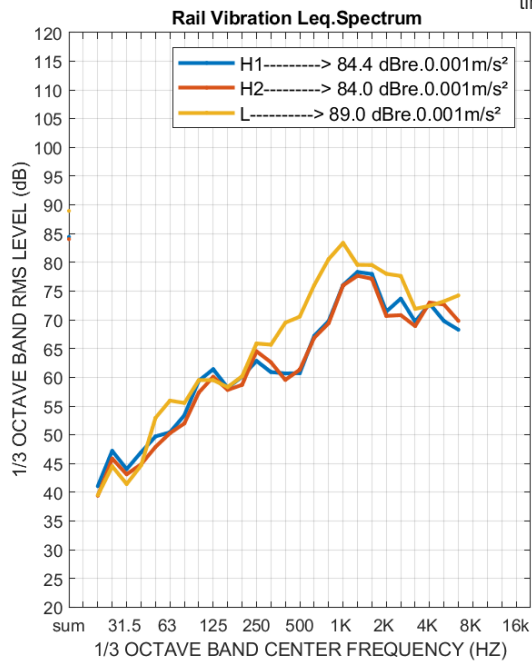
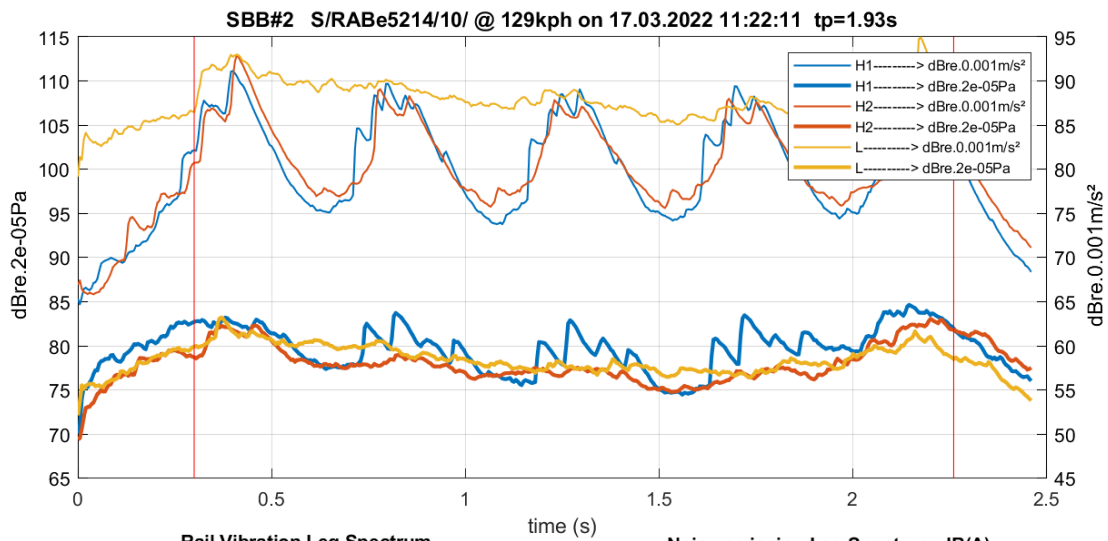


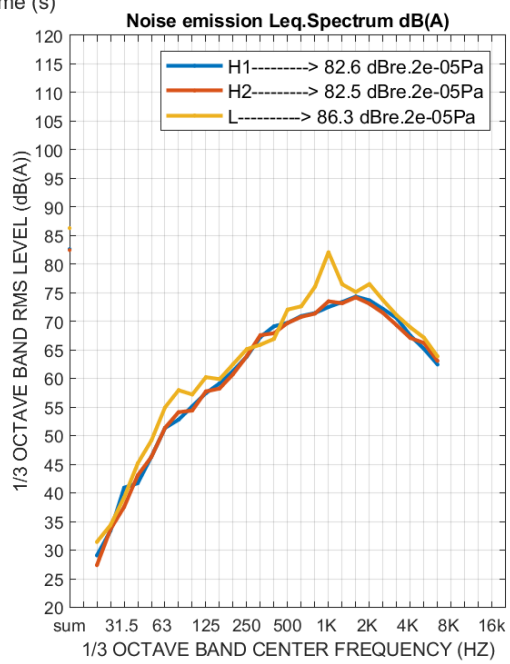
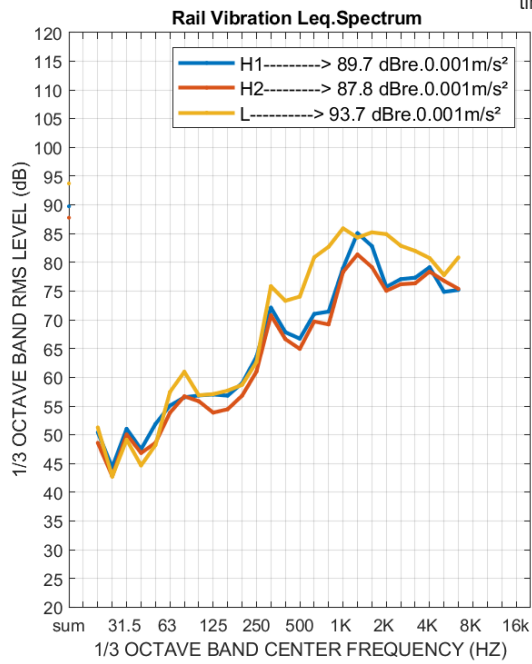
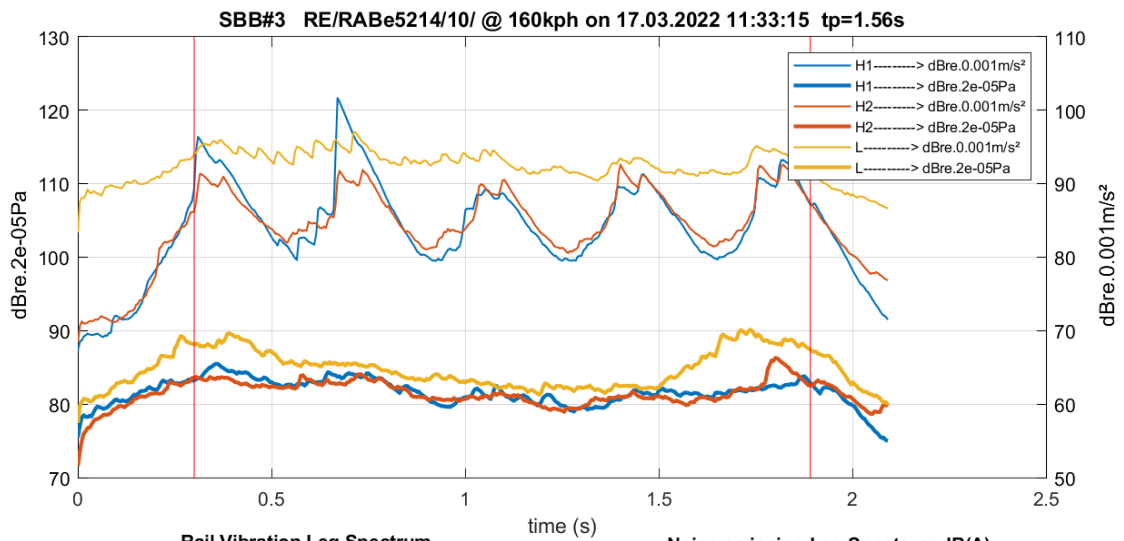
CONTENTS

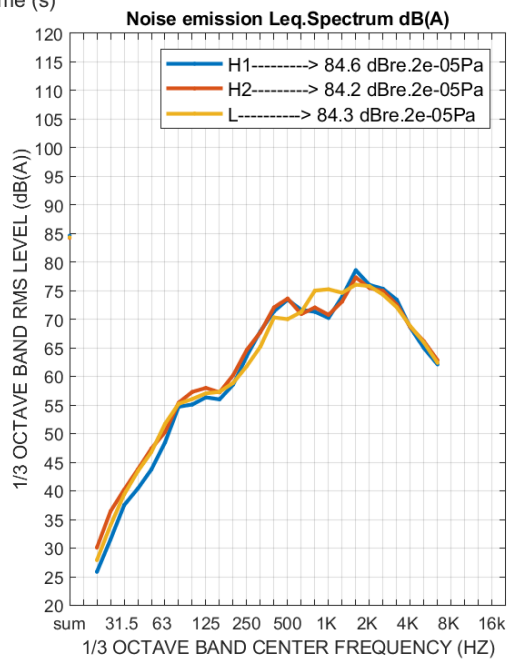
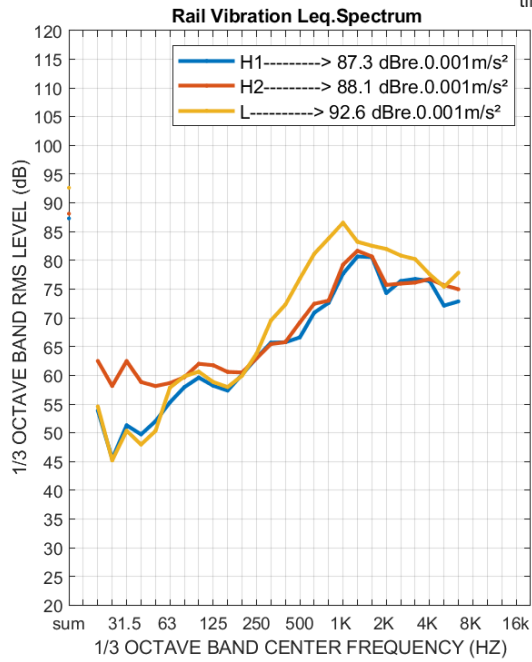
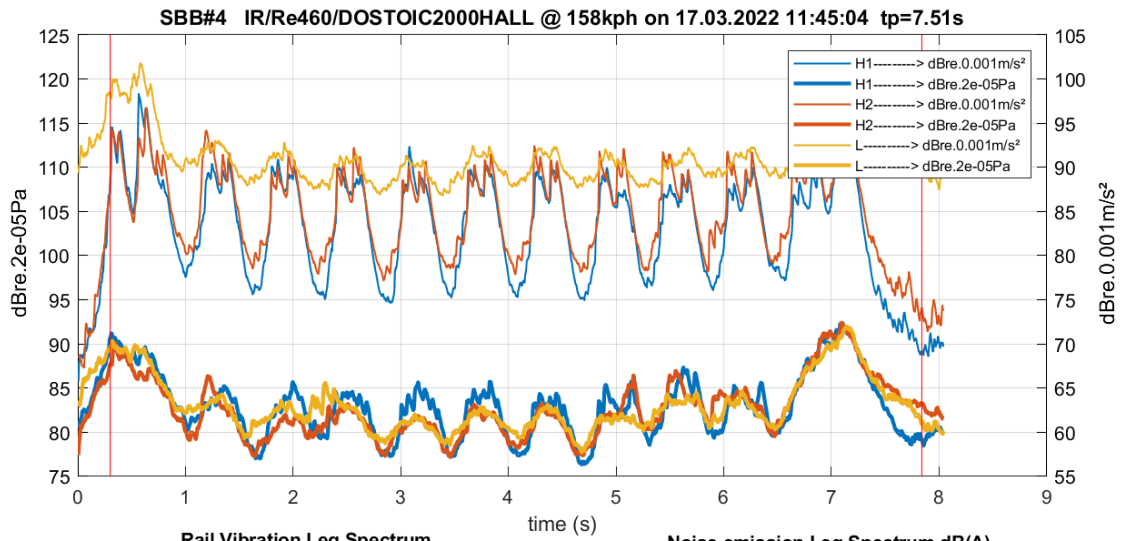
1. SBB, SWITZERLAND - DETAILED PASS-BY PLOTS	3
--	---

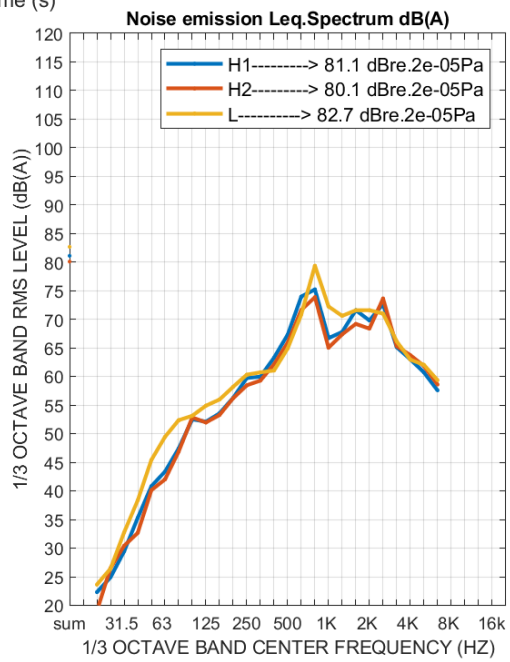
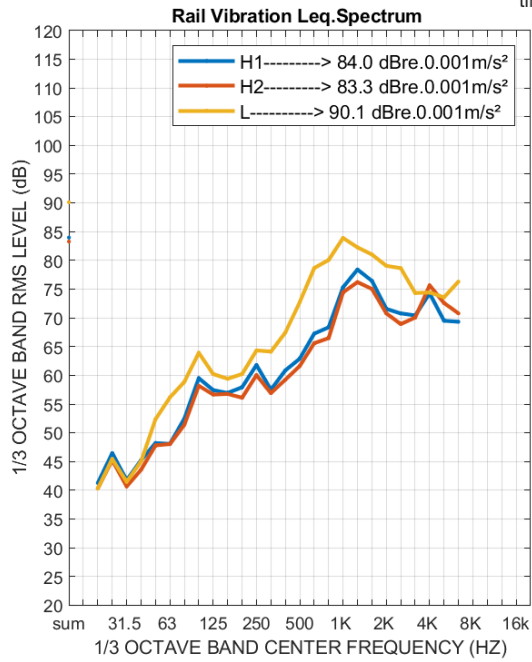
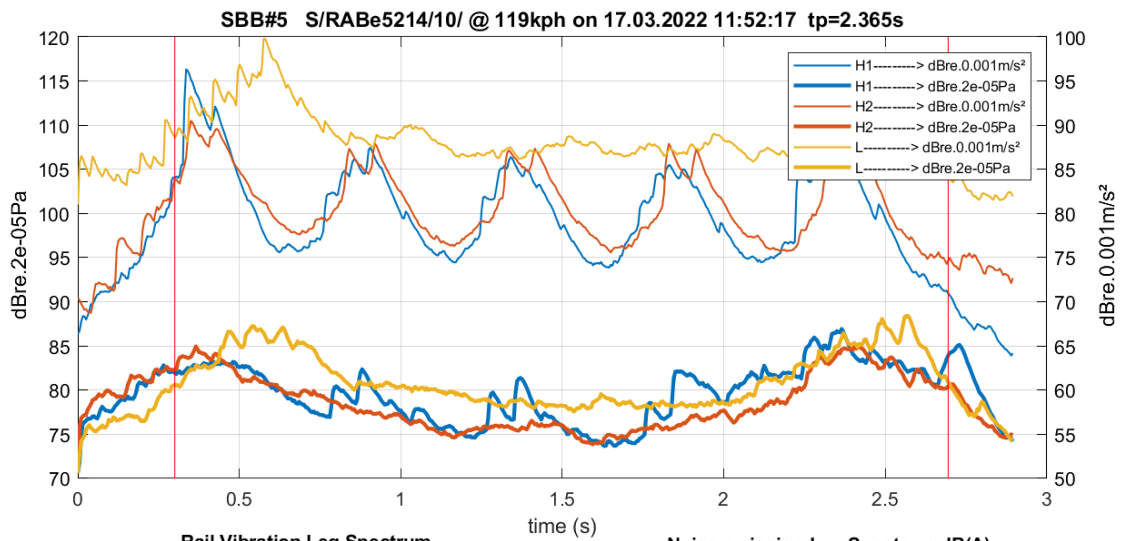
1. SBB, SWITZERLAND - DETAILED PASS-BY PLOTS

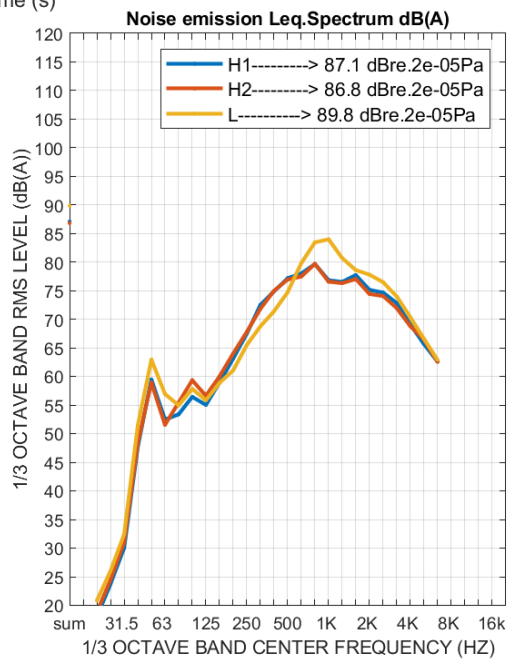
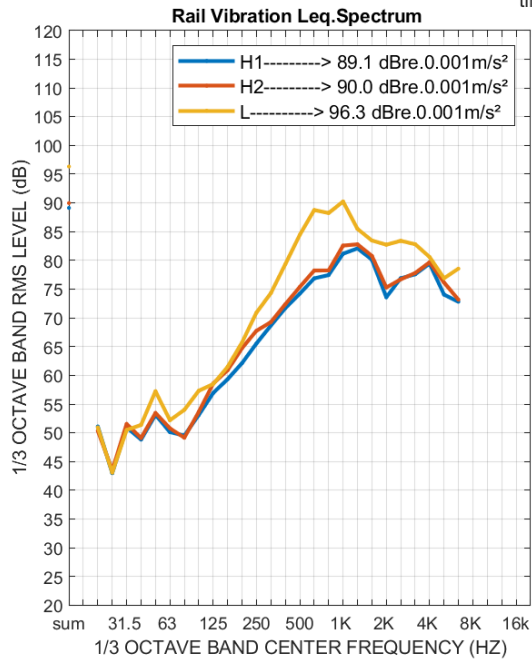
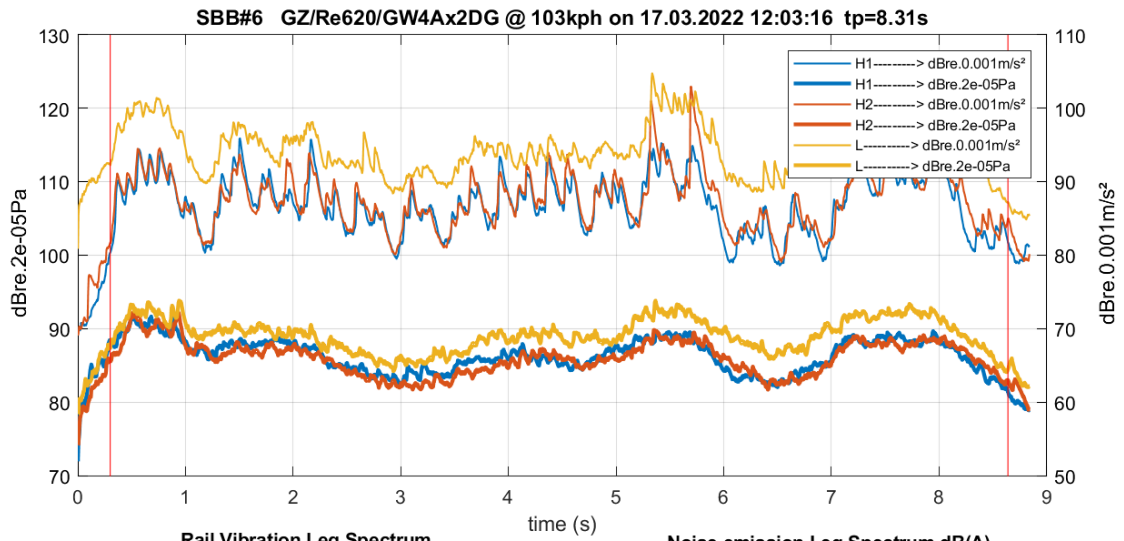


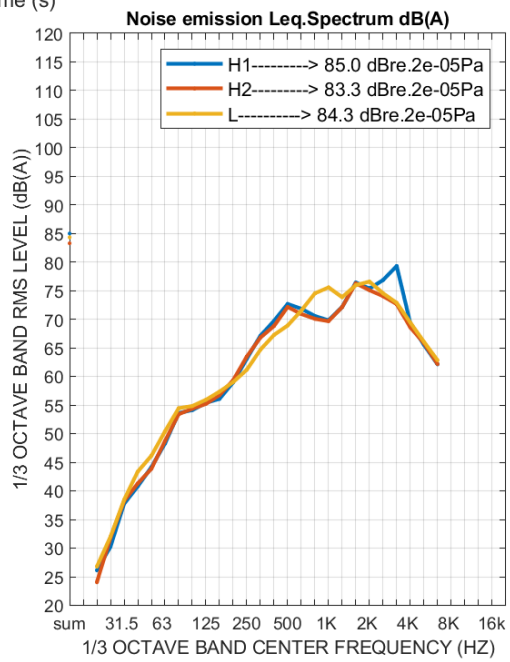
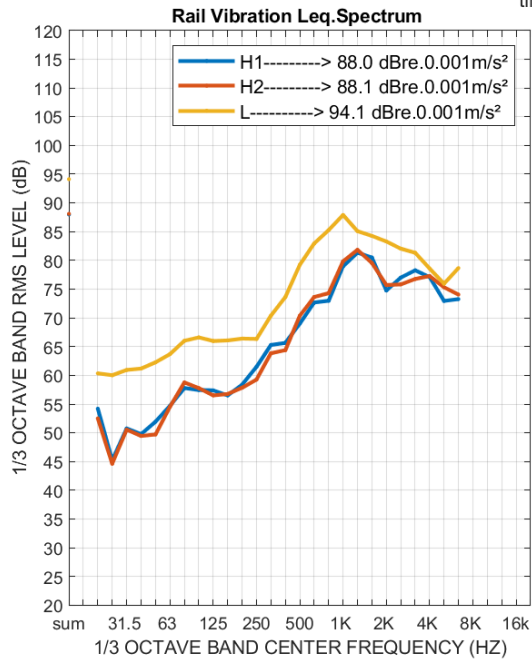
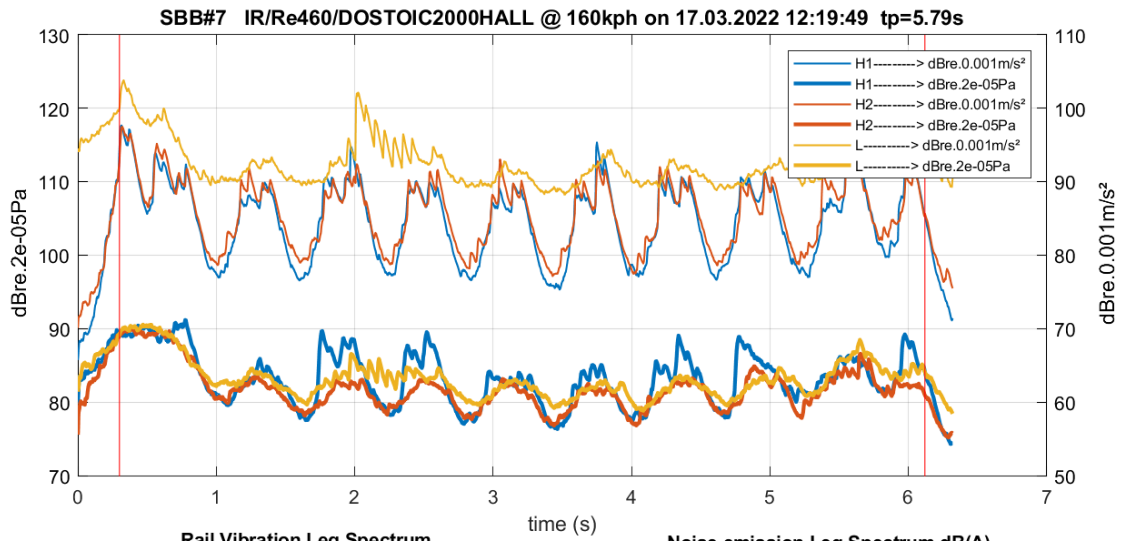


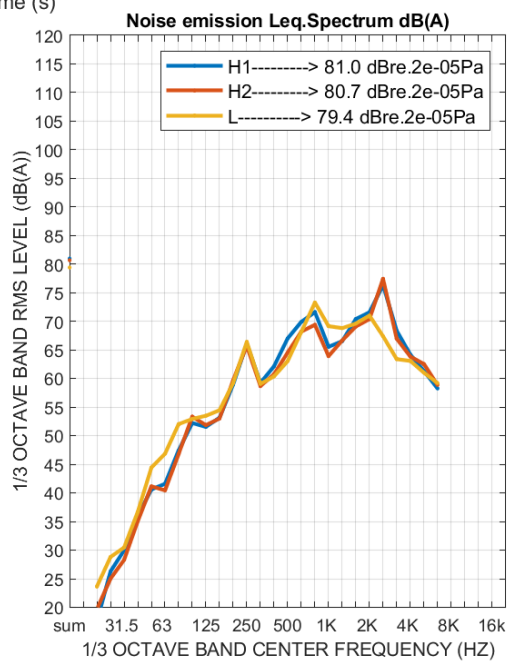
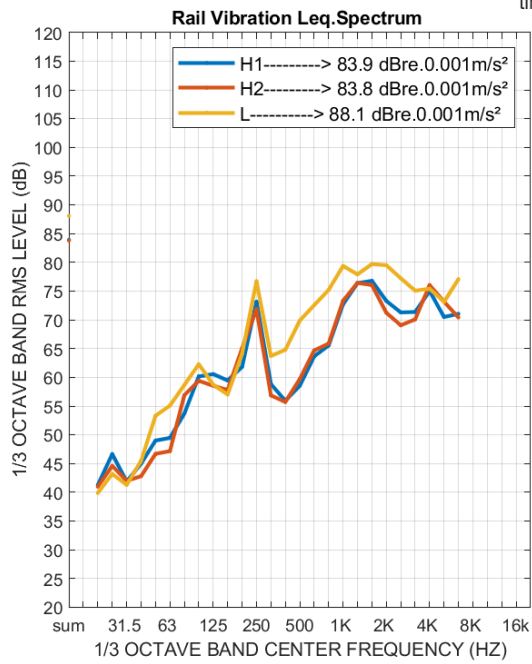
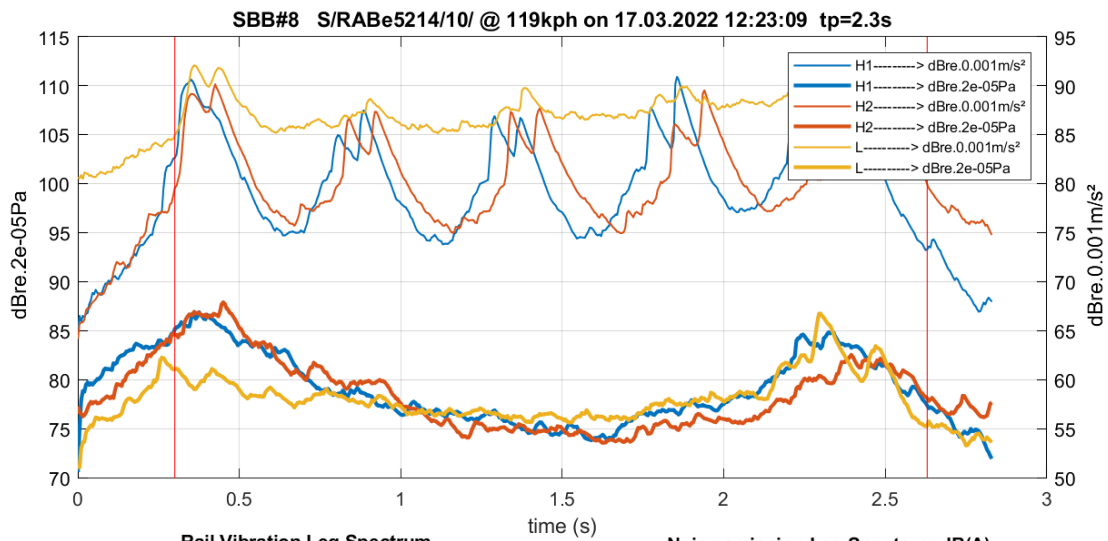


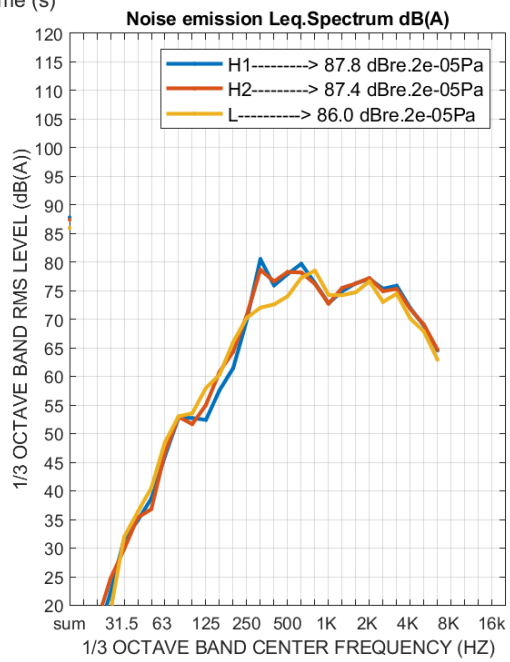
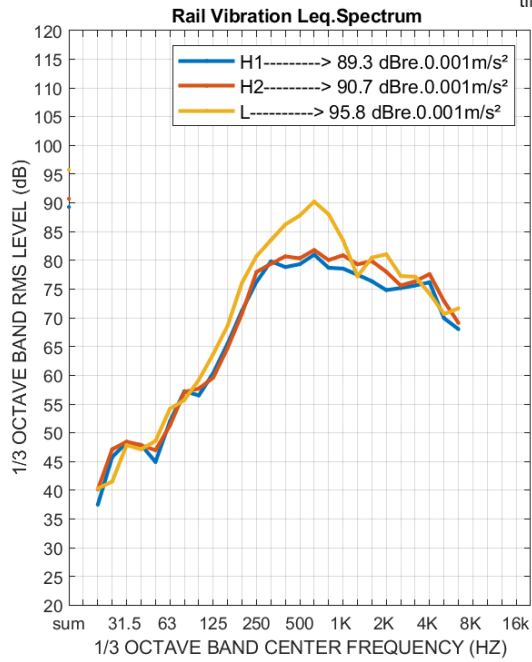
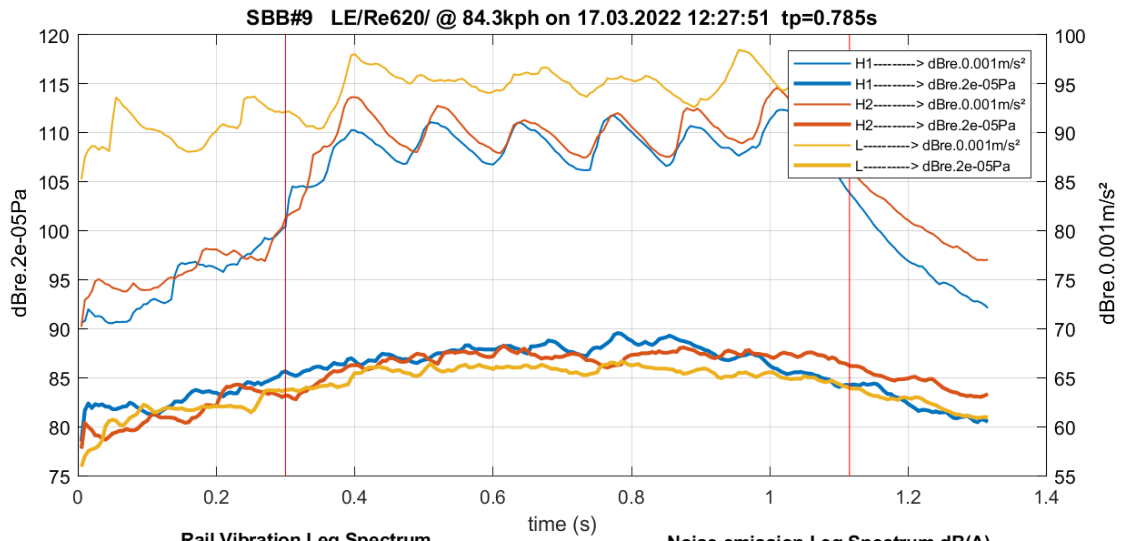


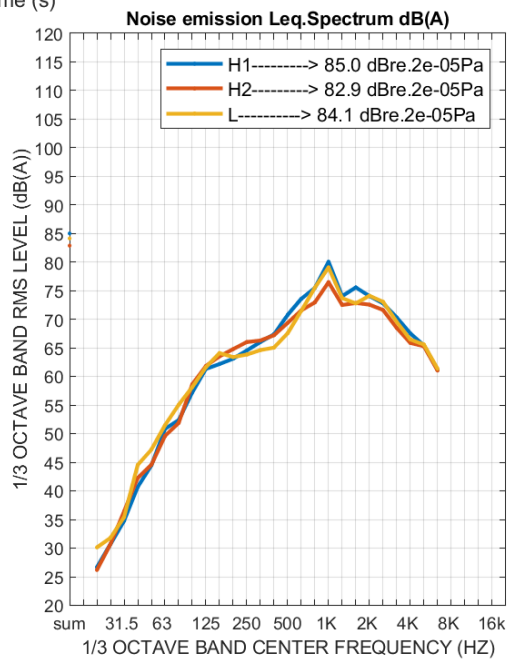
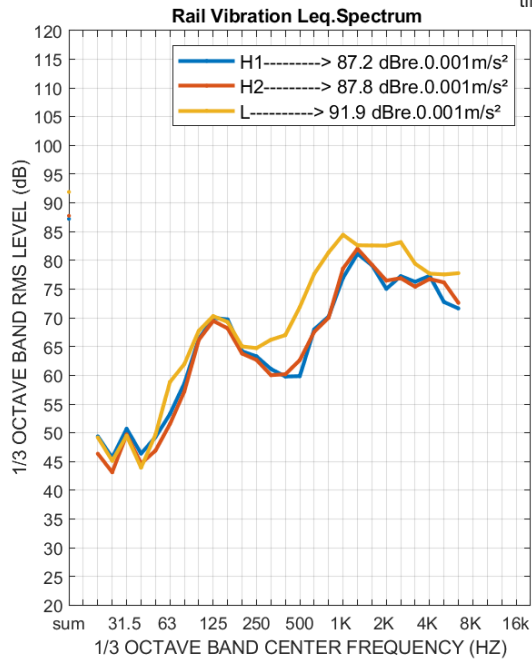
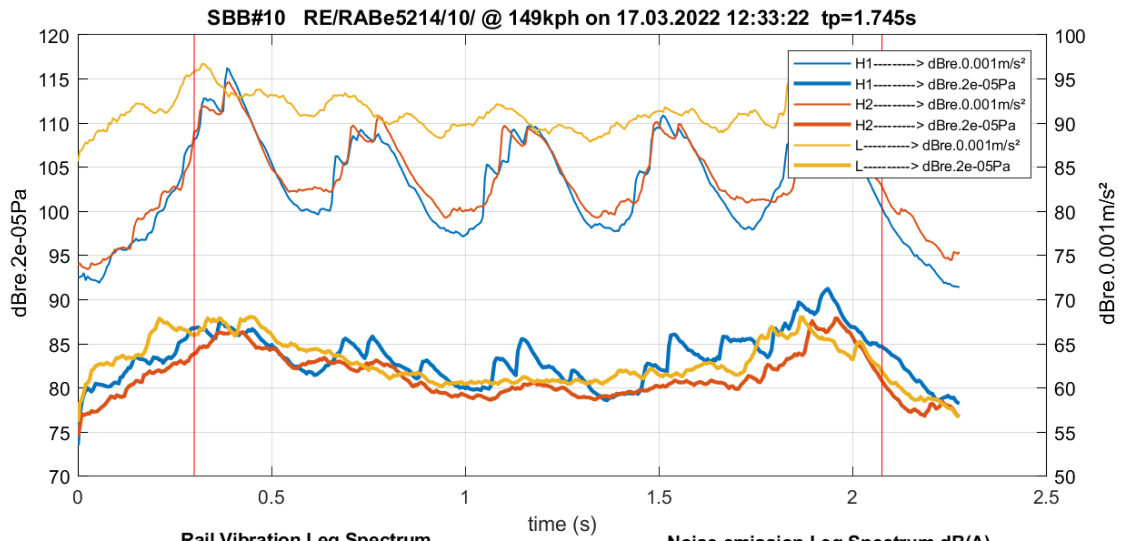




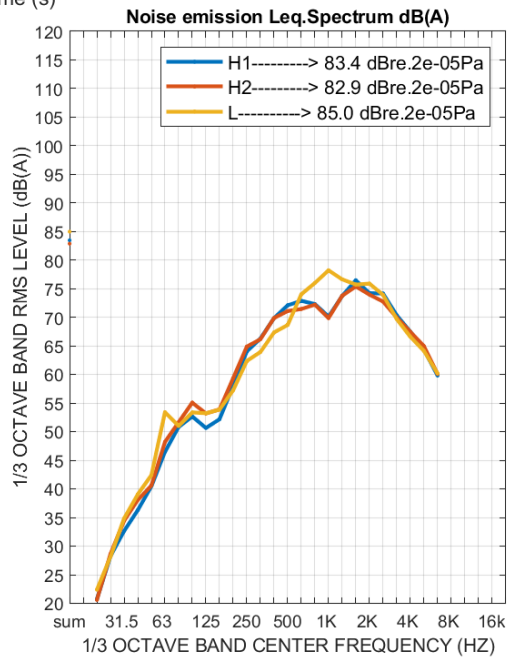
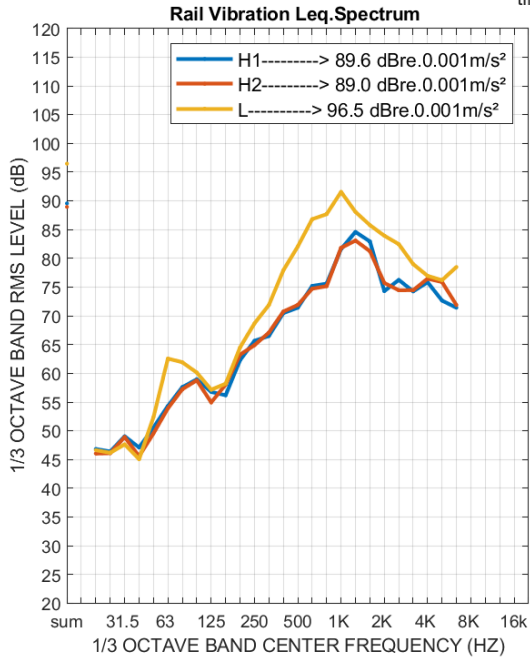
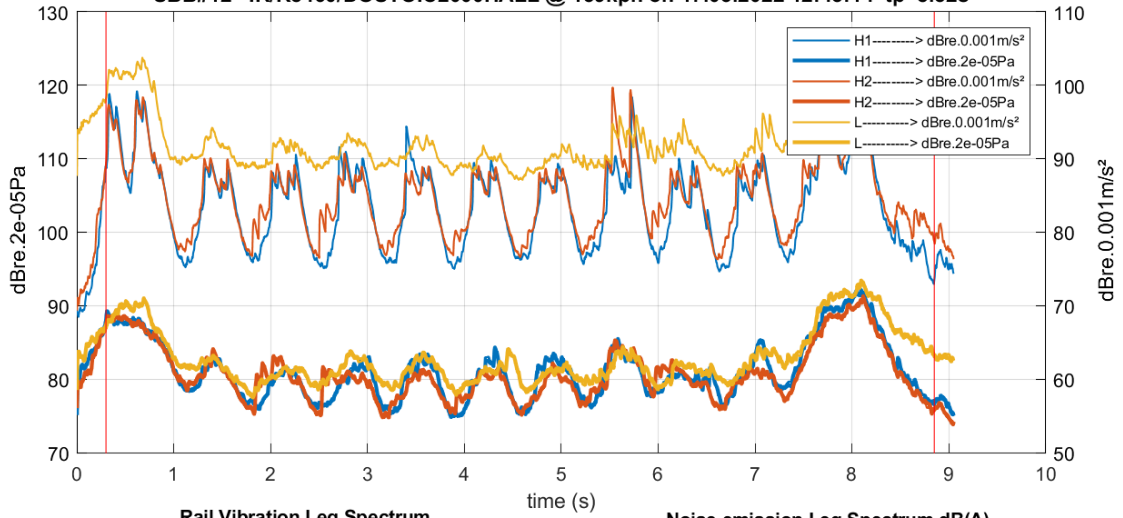


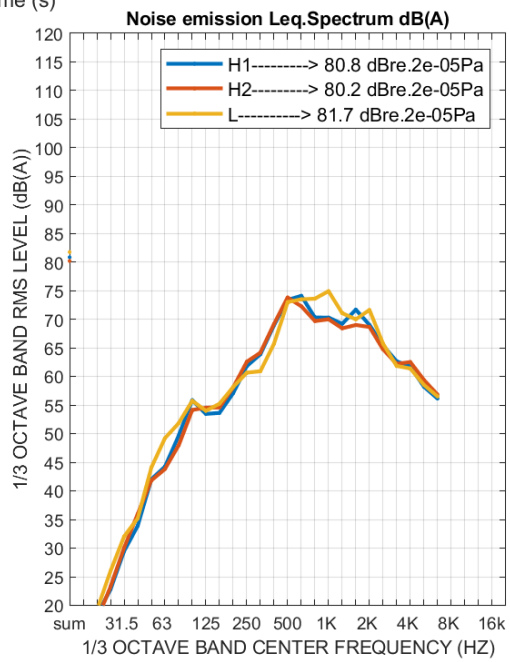
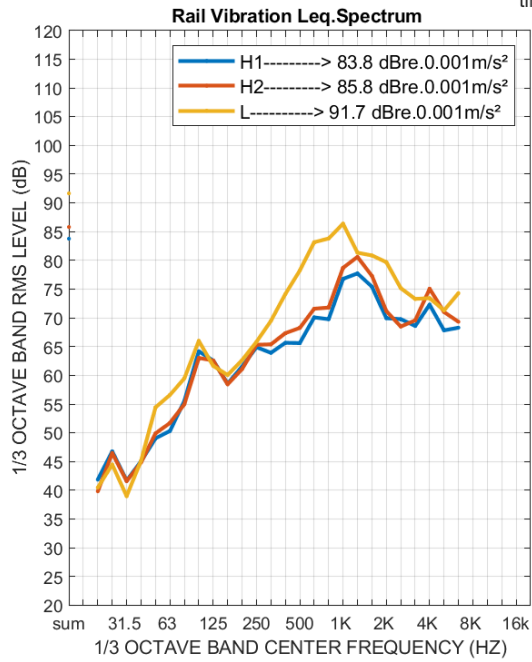
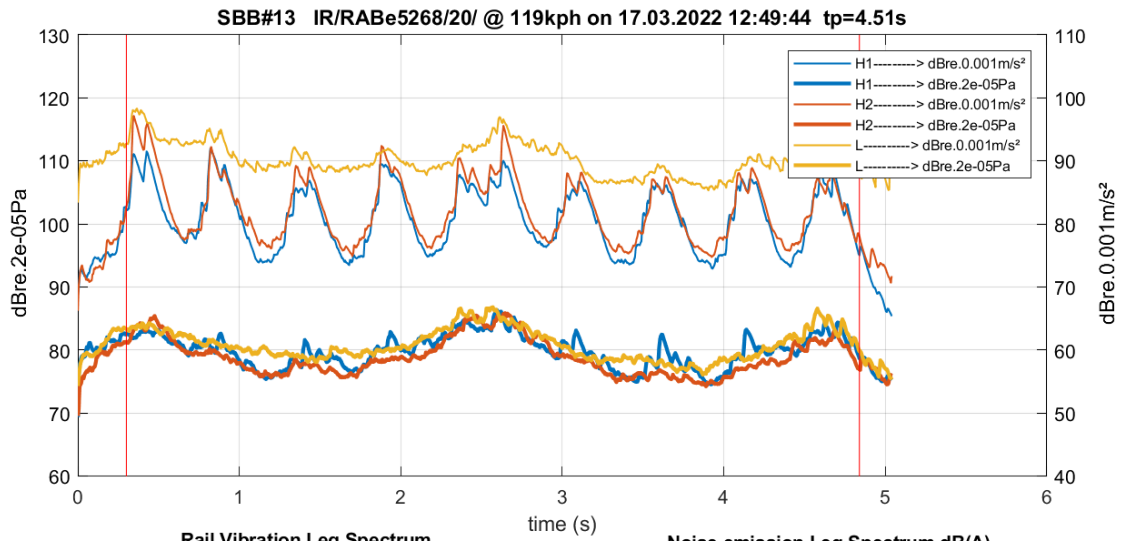


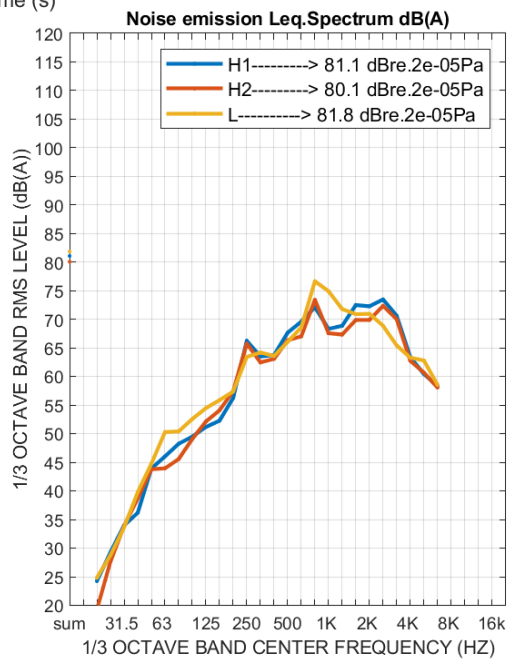
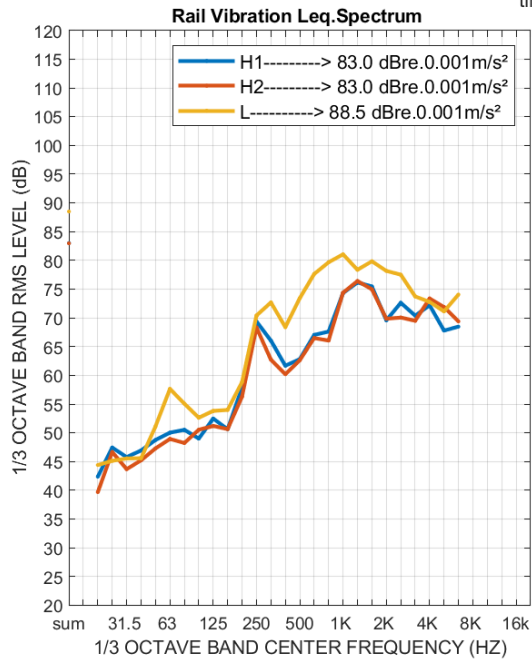
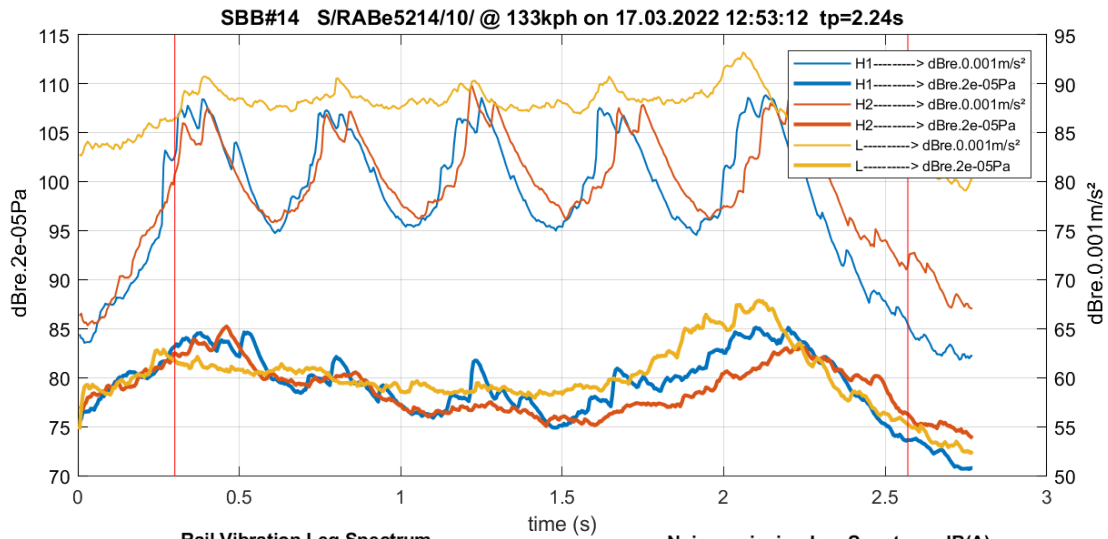


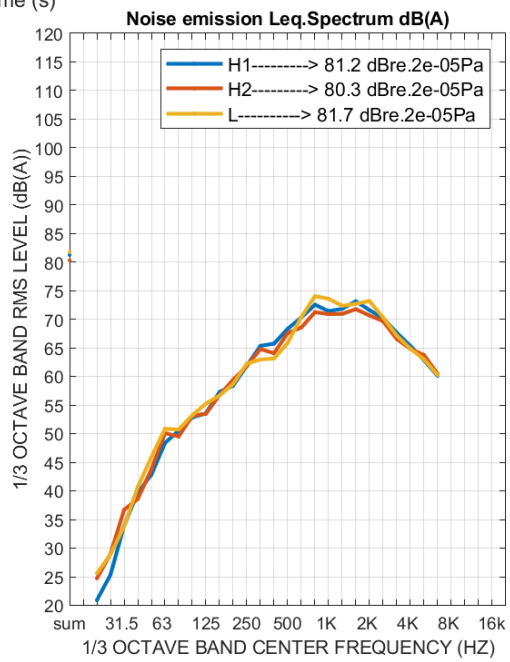
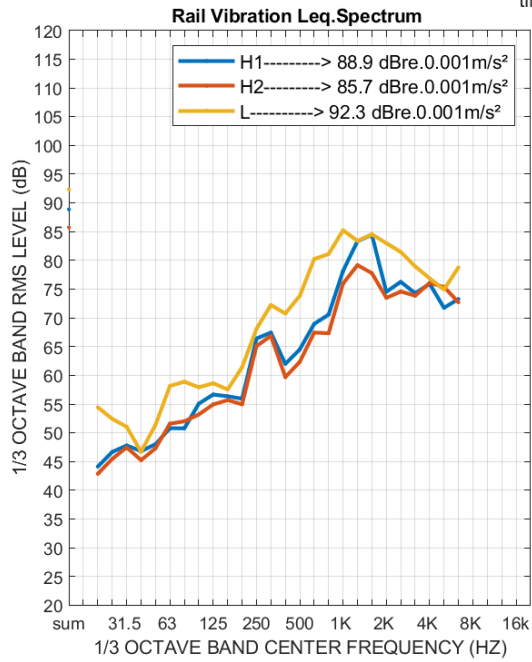
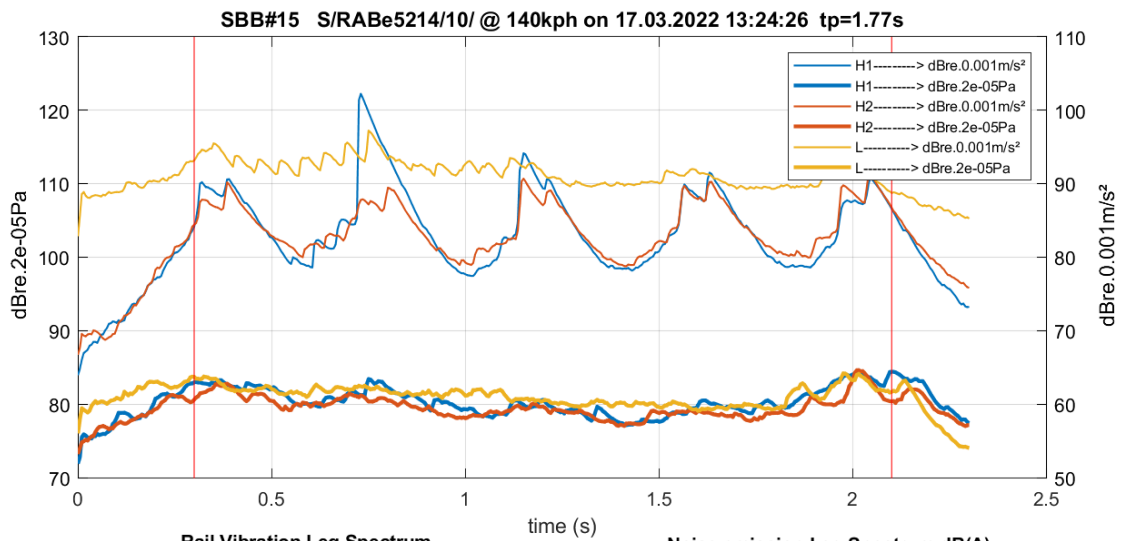


SBB#12 IR/Re460/DOSTOIC2000HALL @ 139kph on 17.03.2022 12:45:14 tp=8.52s

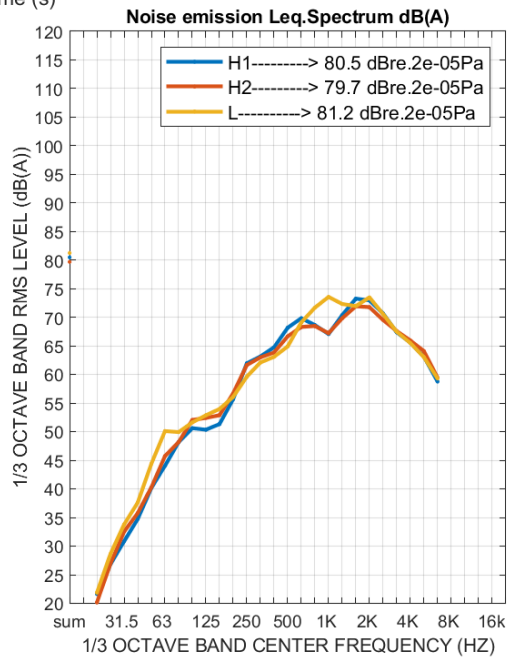
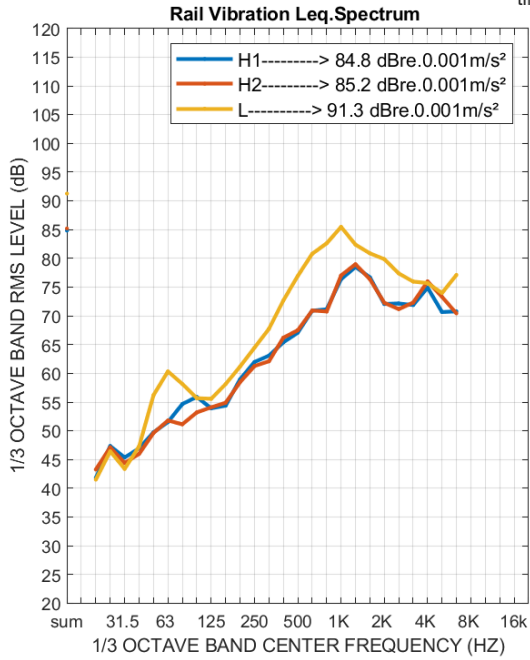
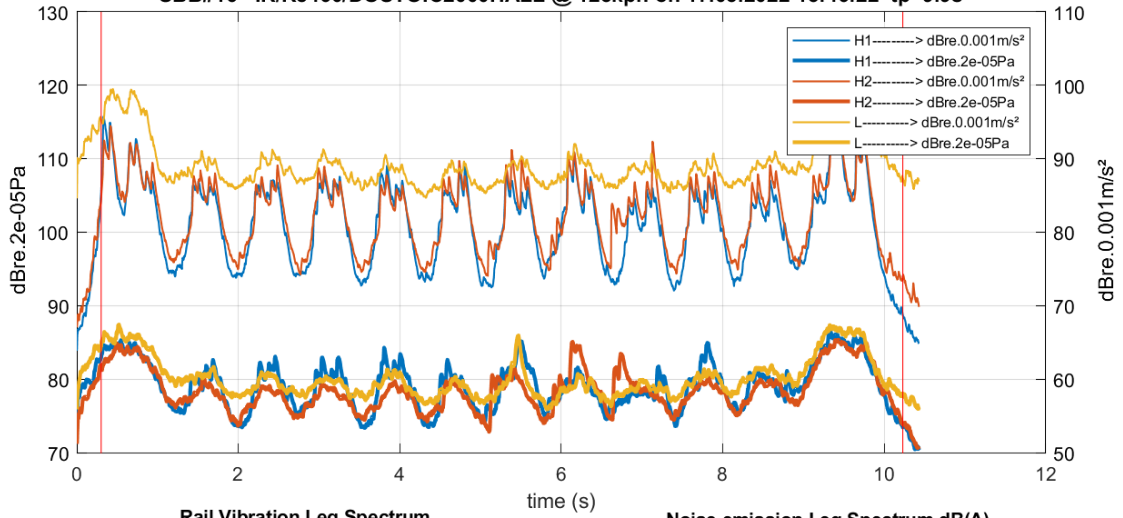


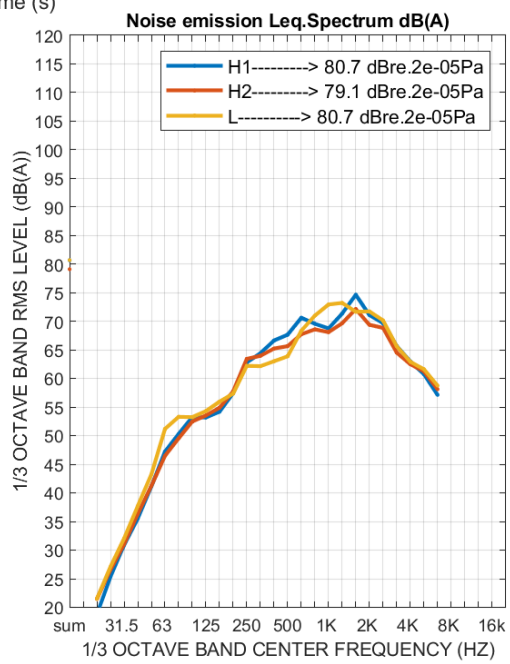
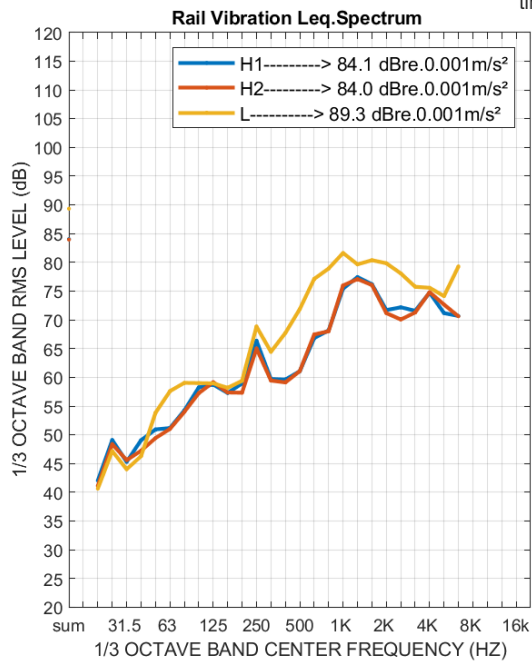
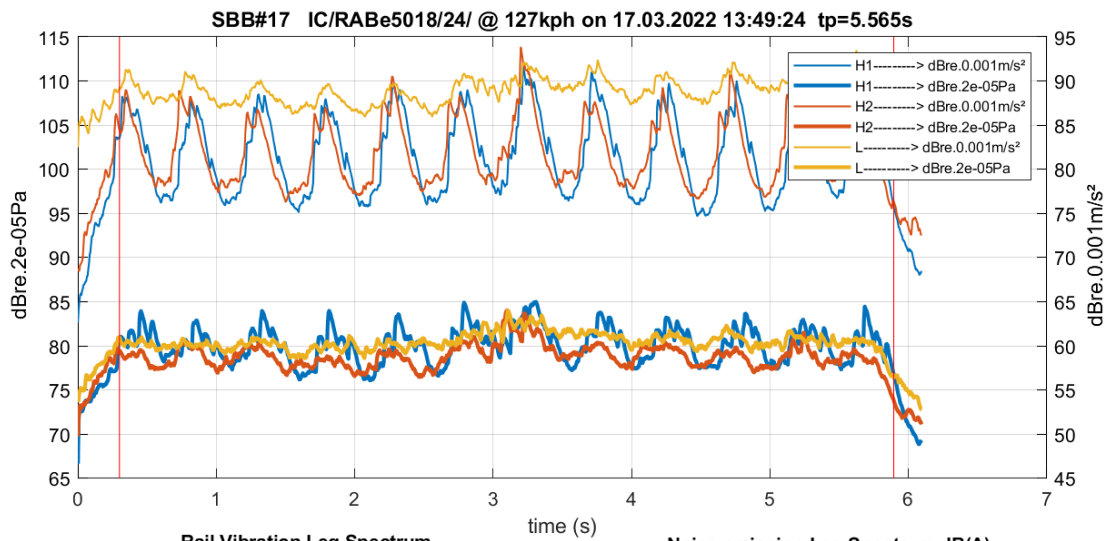


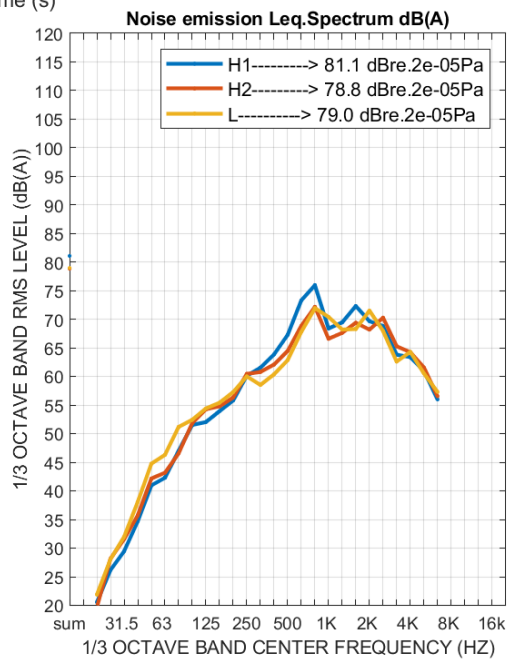
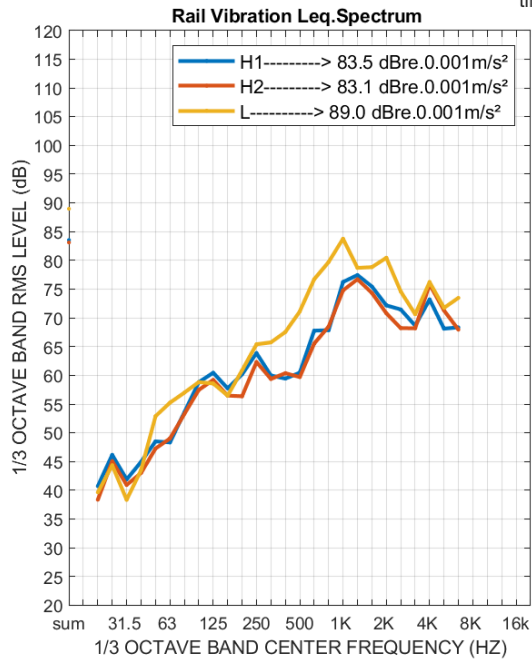
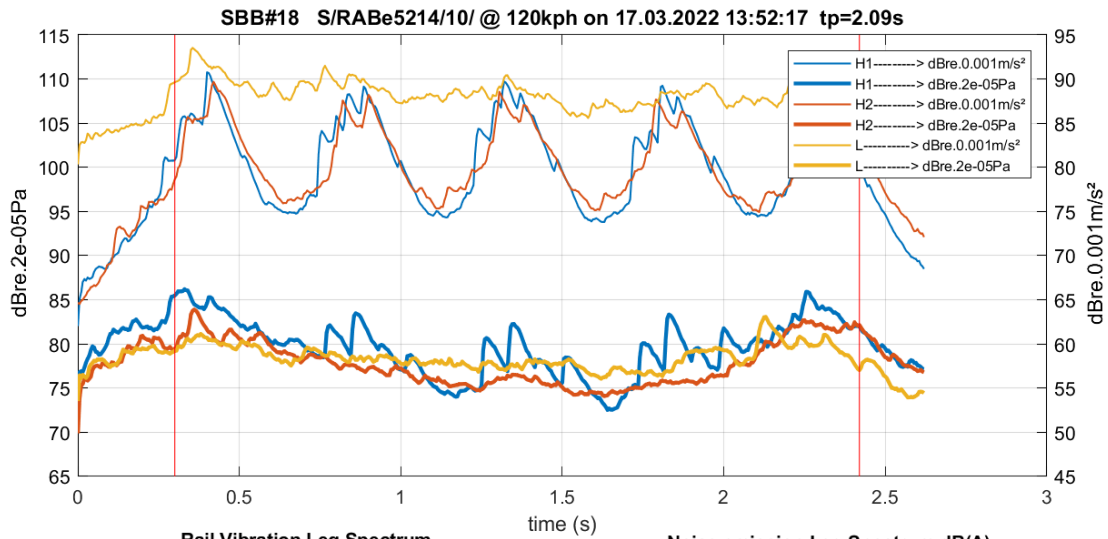


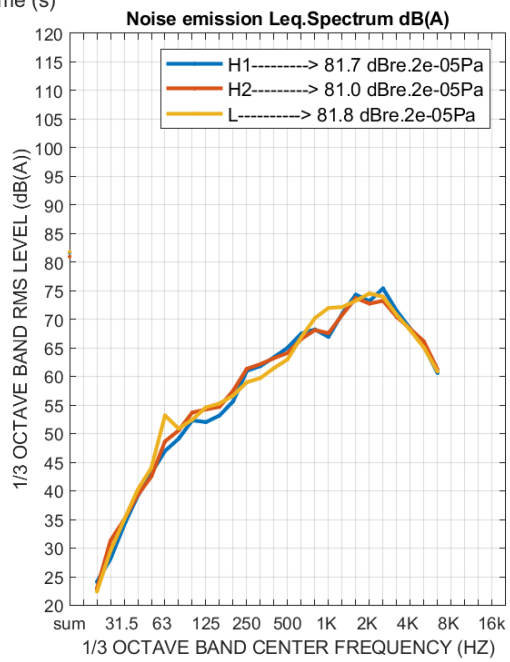
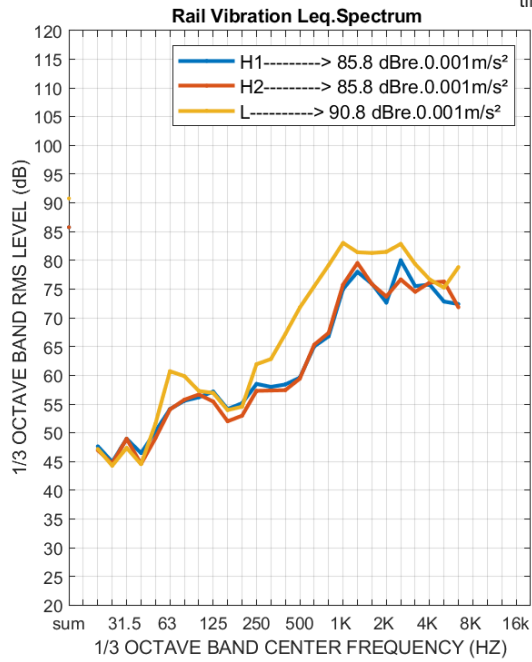
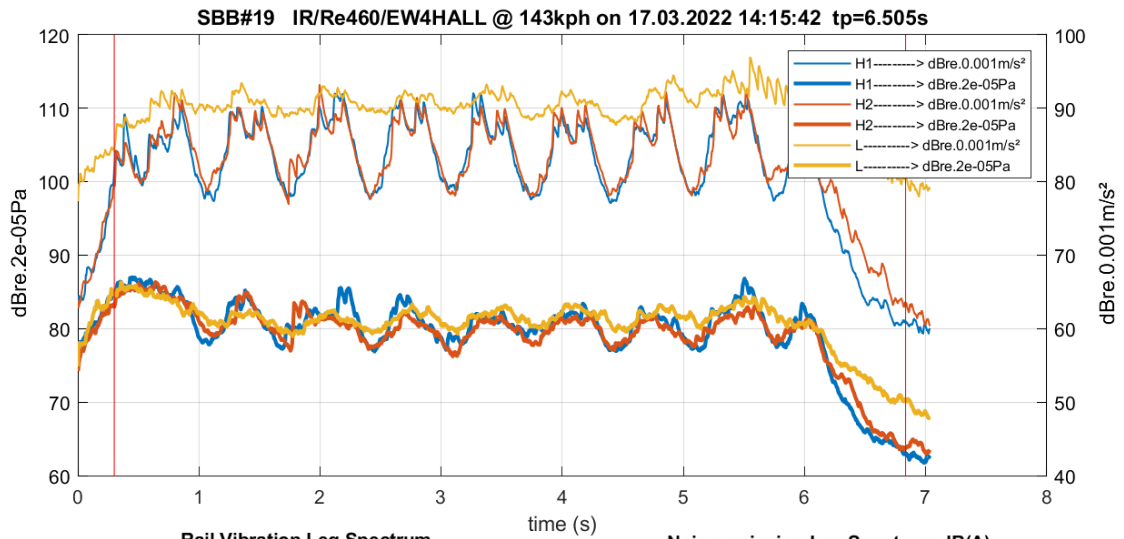


SBB#16 IR/Re460/DOSTOIC2000HALL @ 125kph on 17.03.2022 13:46:22 tp=9.9s

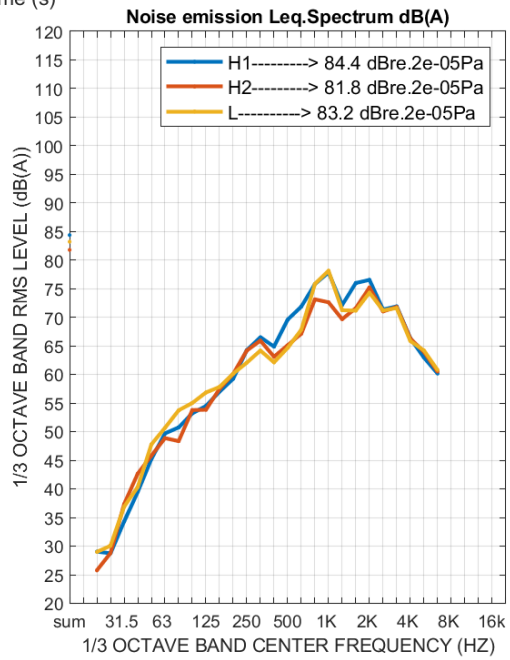
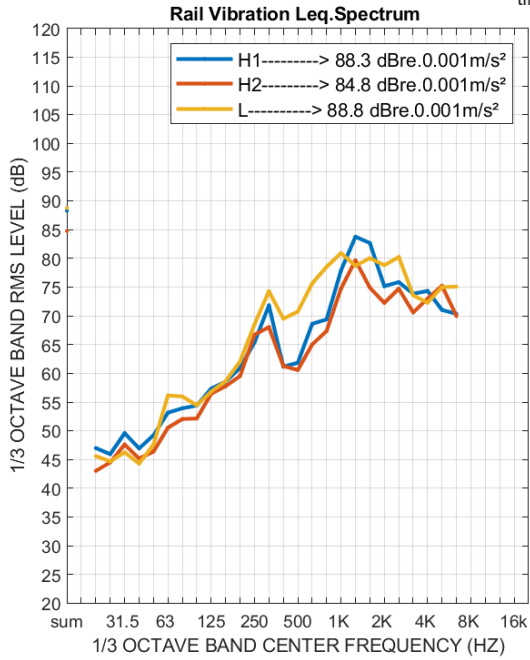
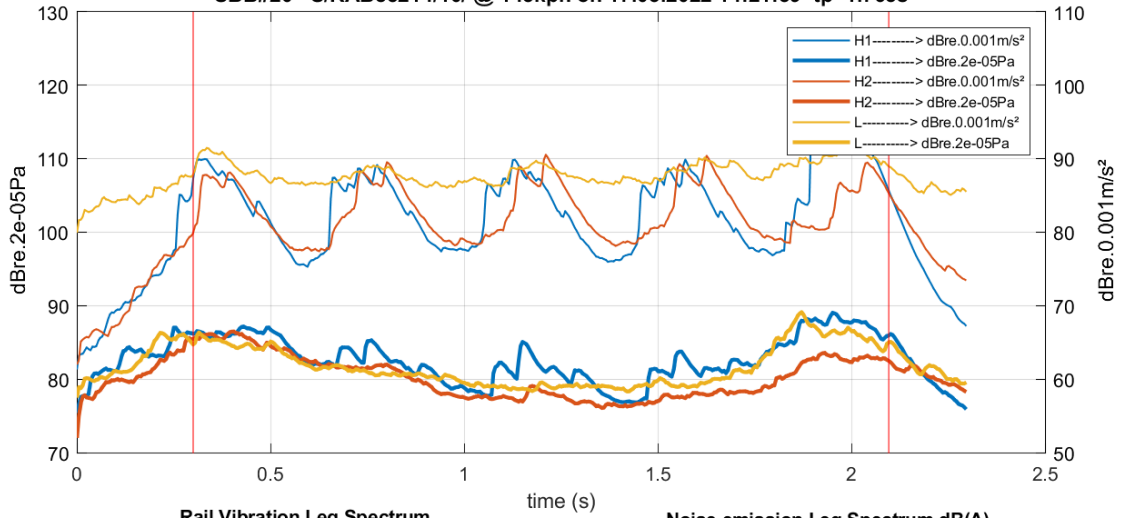


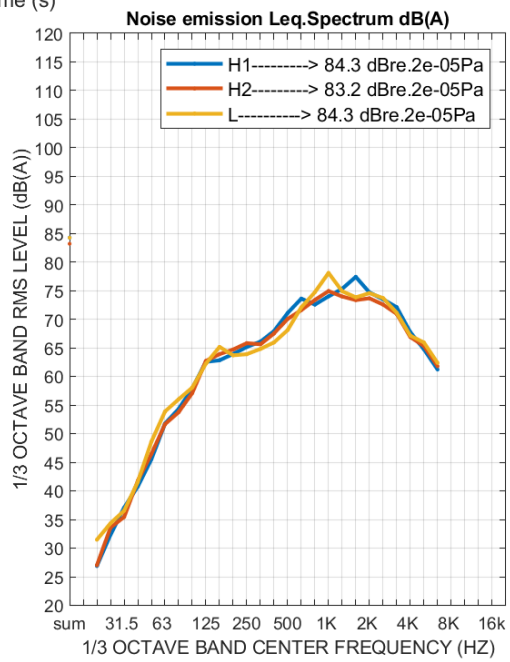
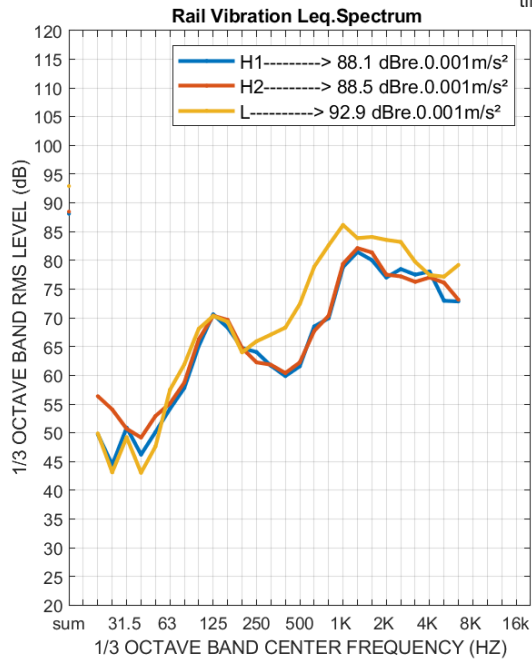
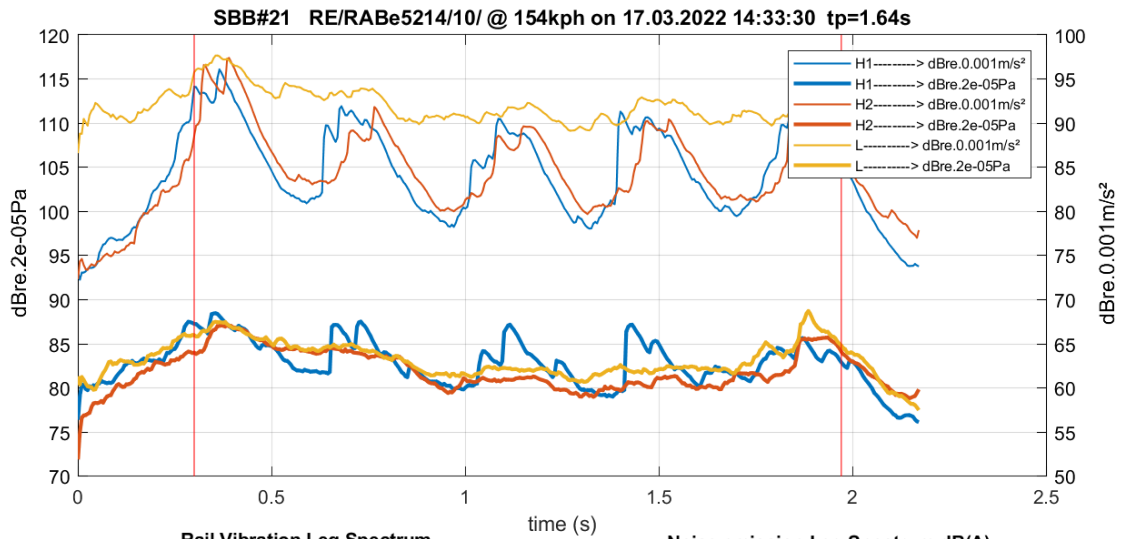


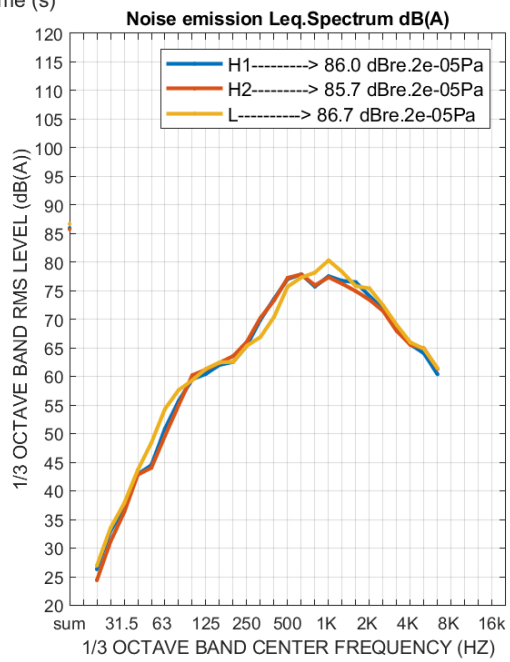
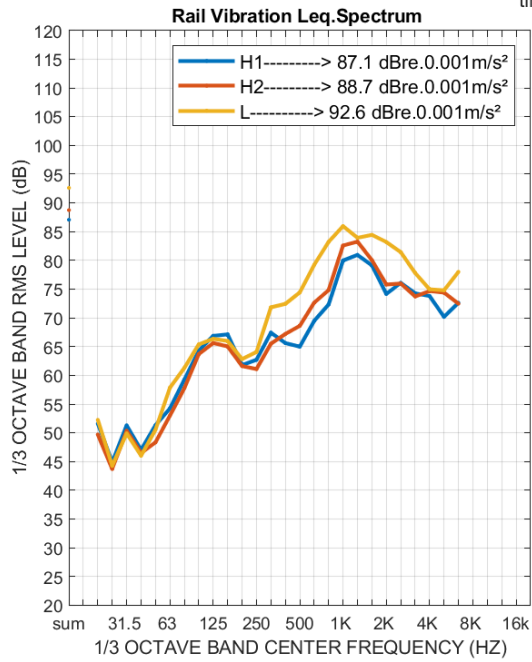
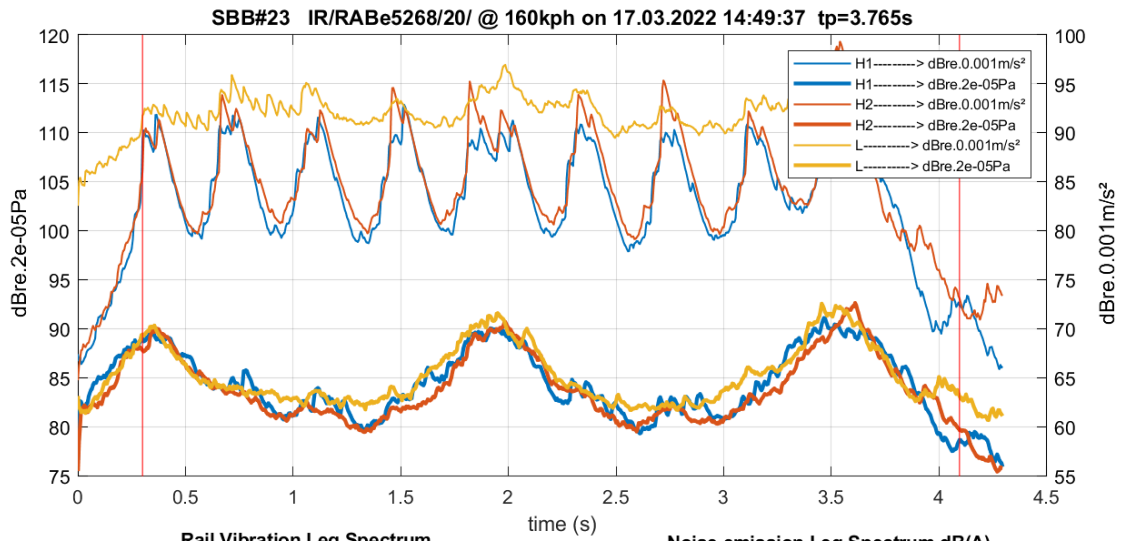


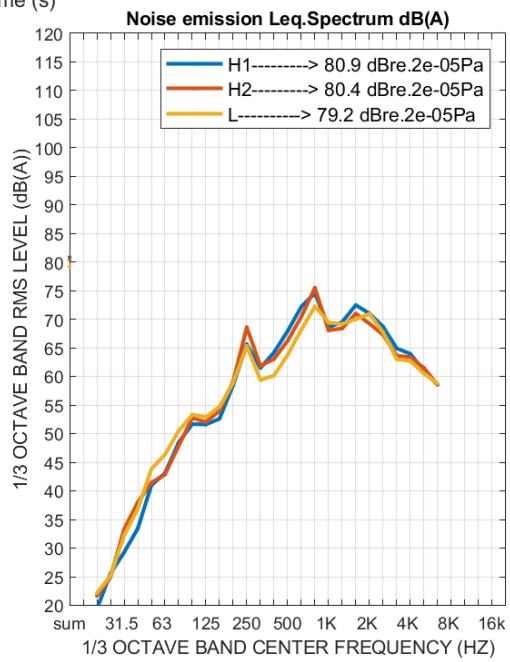
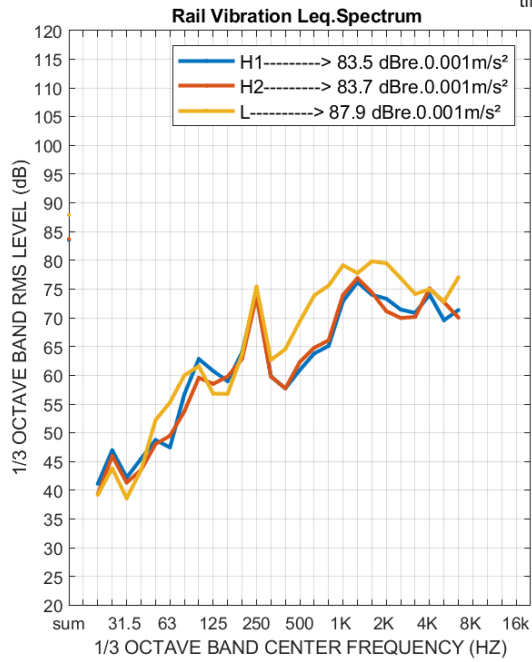
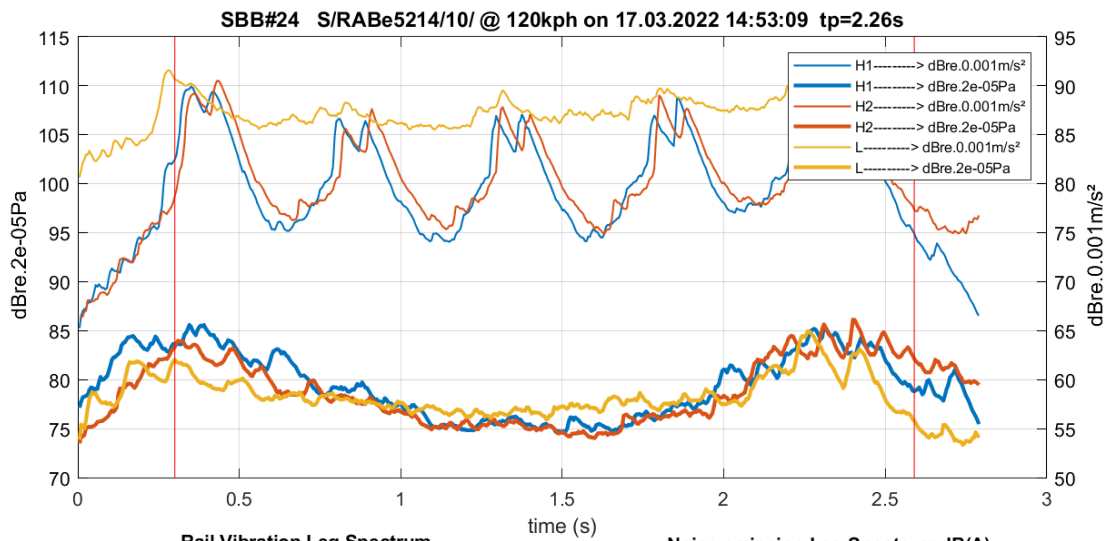


SBB#20 S/RABe5214/10/ @ 145kph on 17.03.2022 14:21:59 tp=1.765s

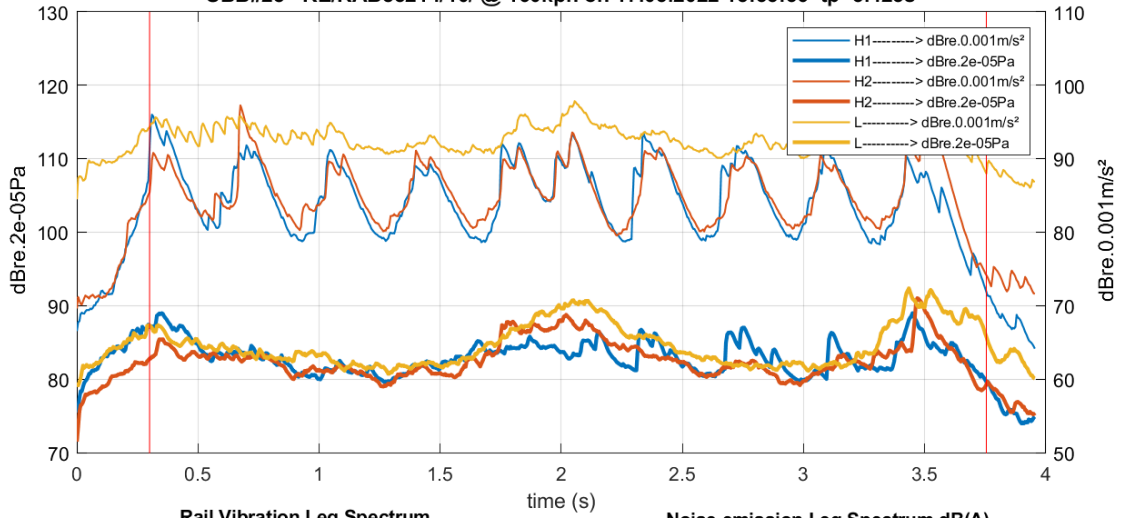




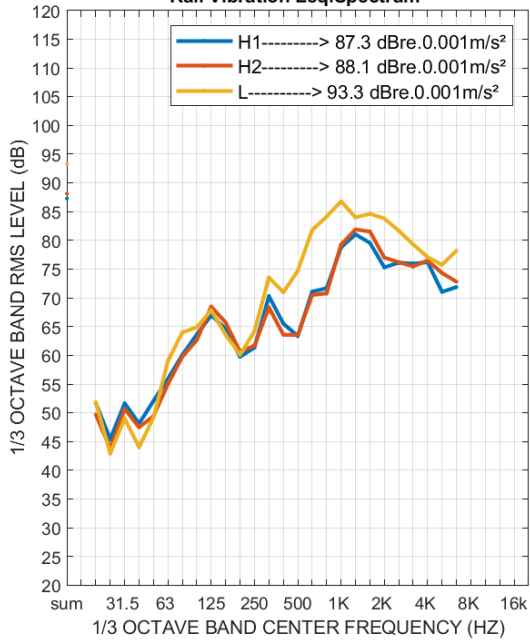




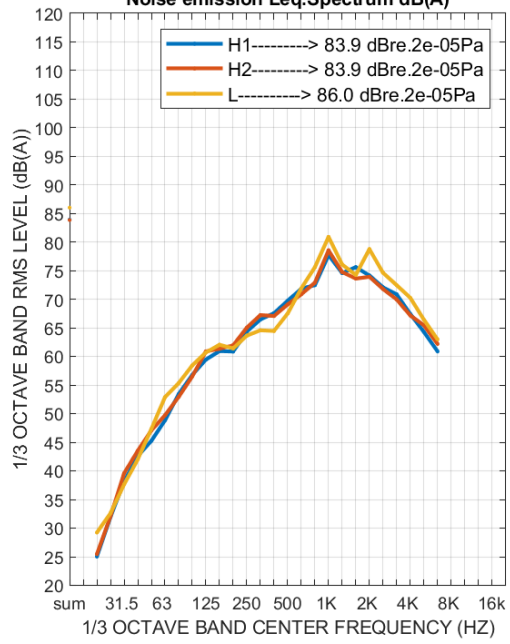
SBB#28 RE/RABe5214/10/ @ 160kph on 17.03.2022 15:33:36 tp=3.425s

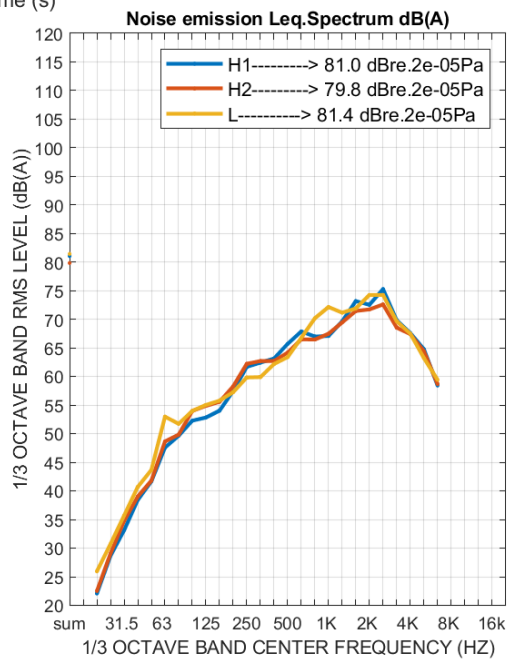
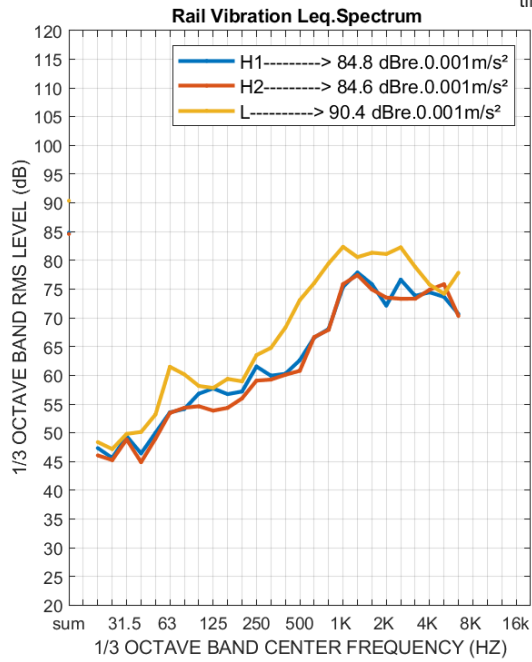
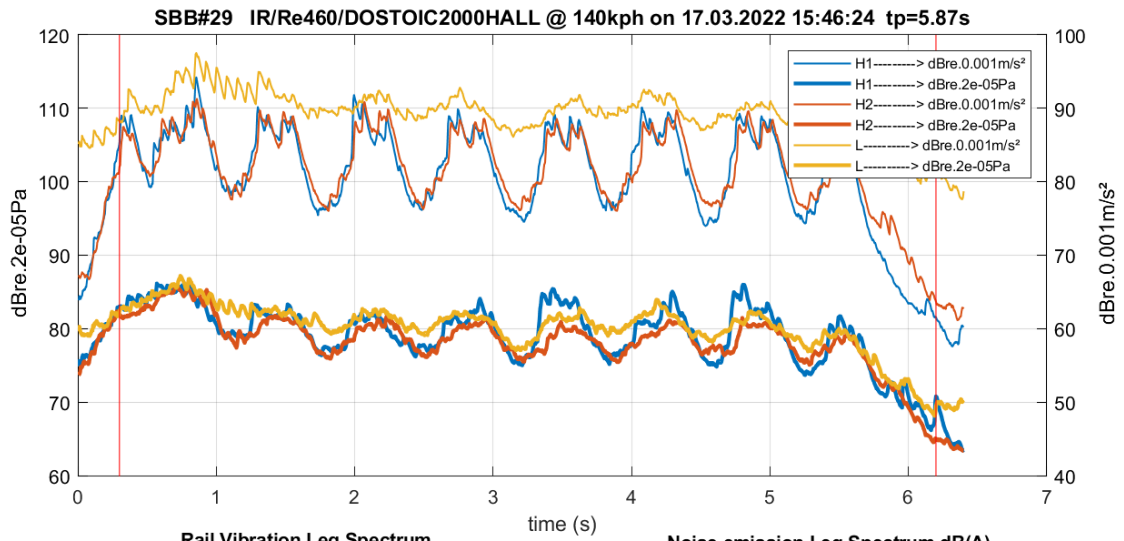


Rail Vibration Leq.Spectrum

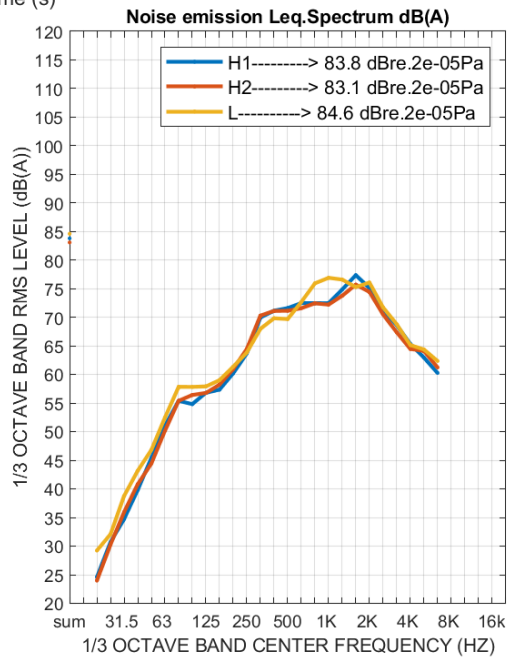
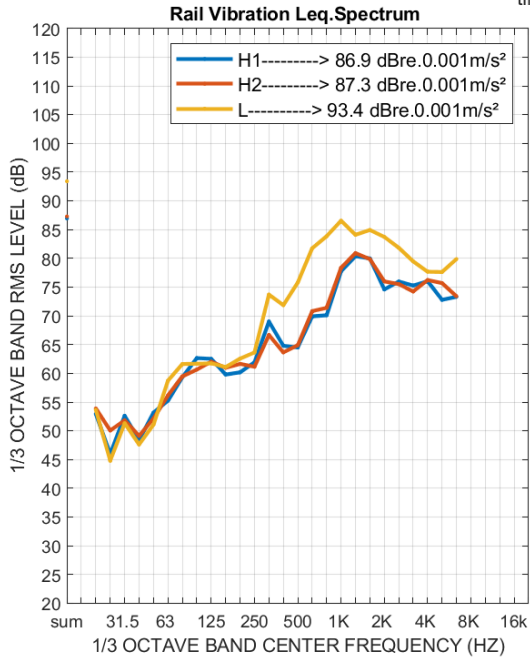
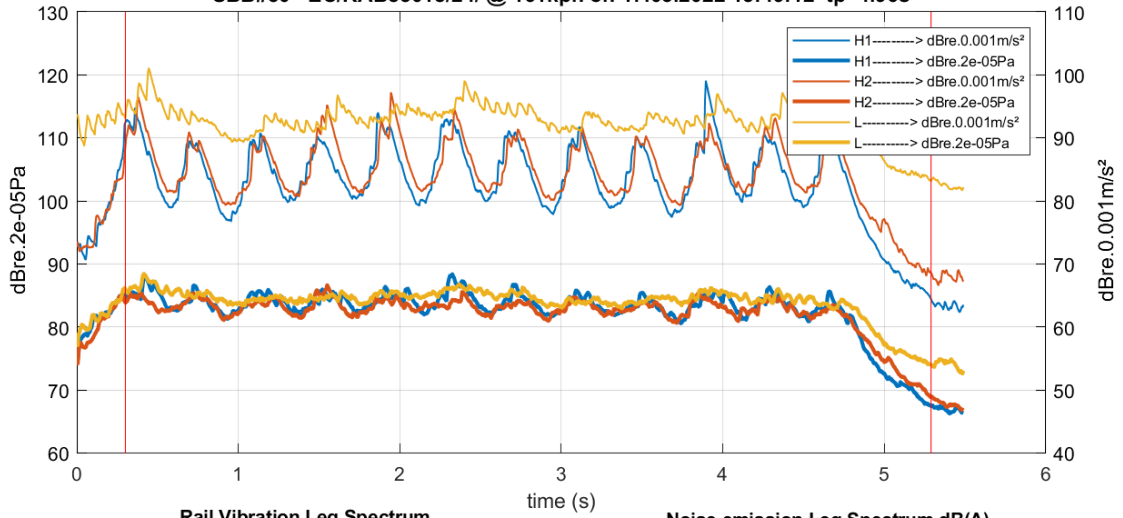


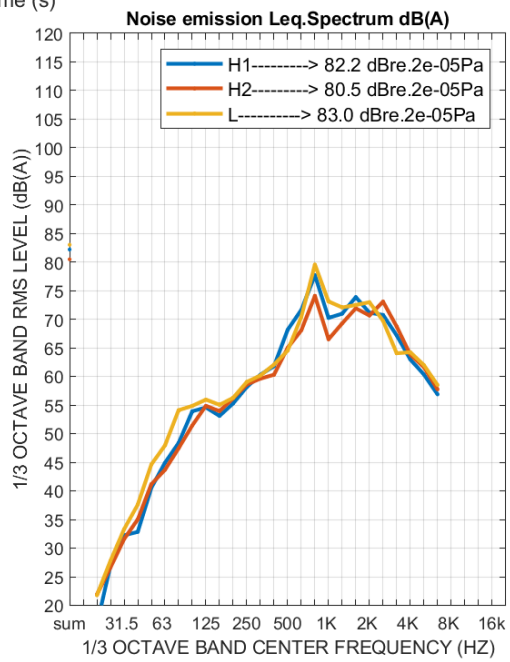
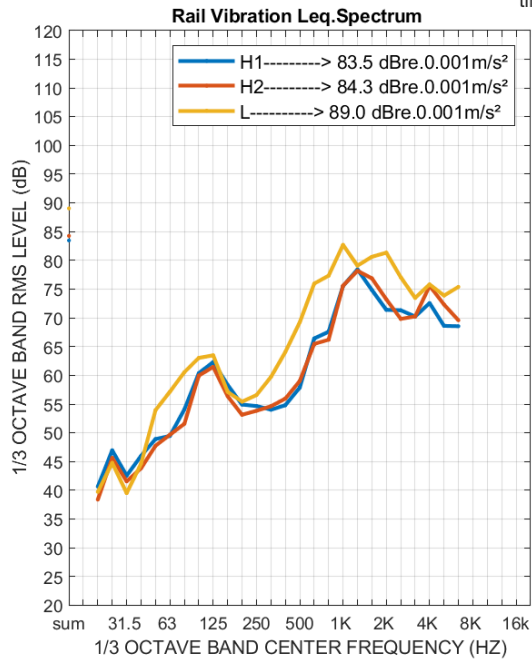
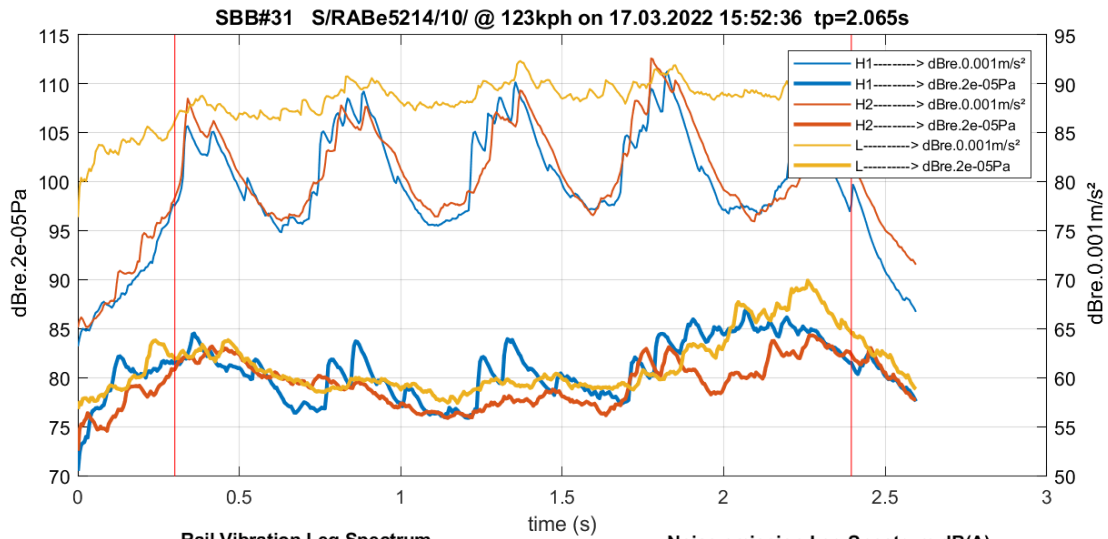
Noise emission Leq.Spectrum dB(A)

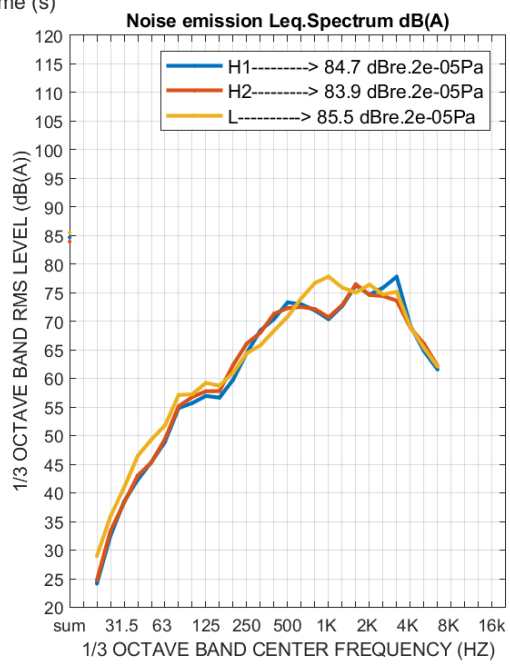
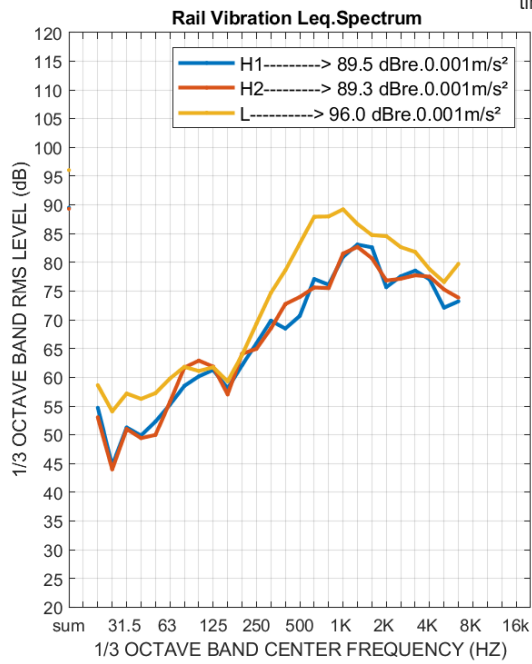
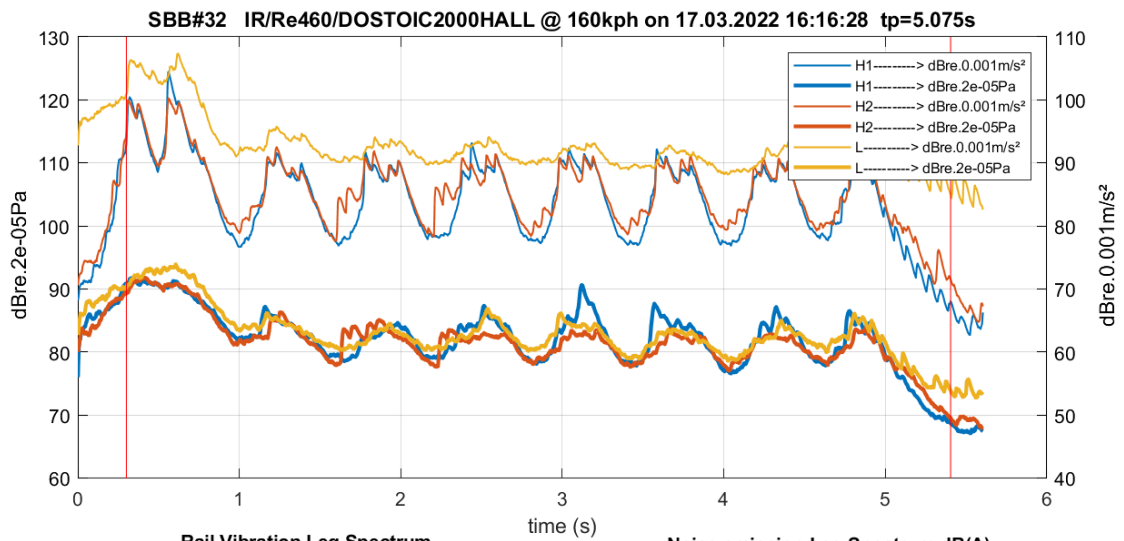


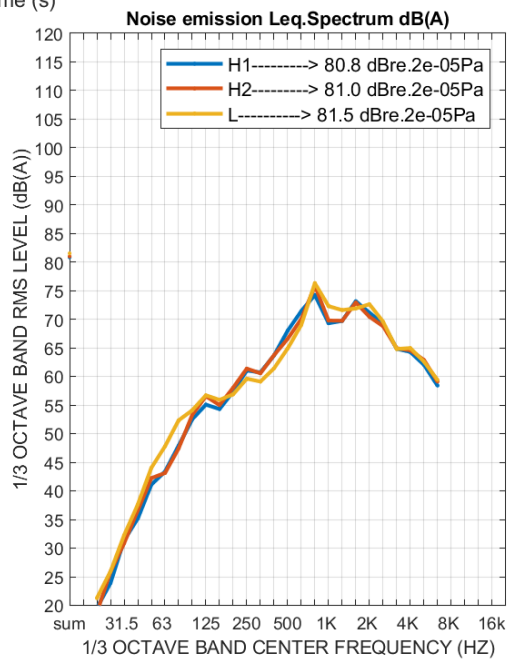
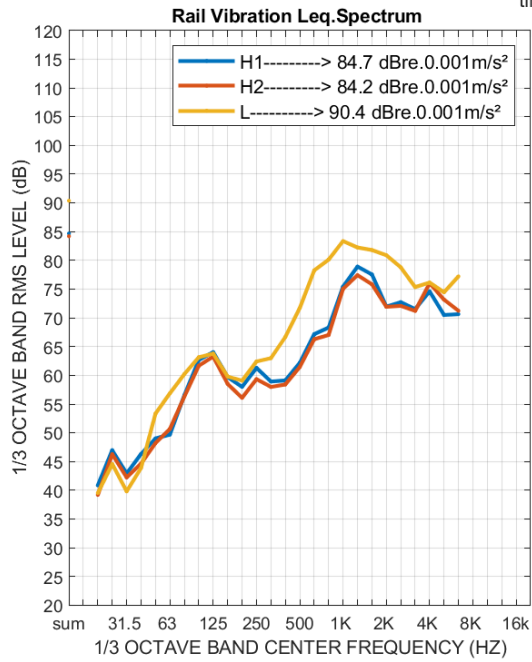
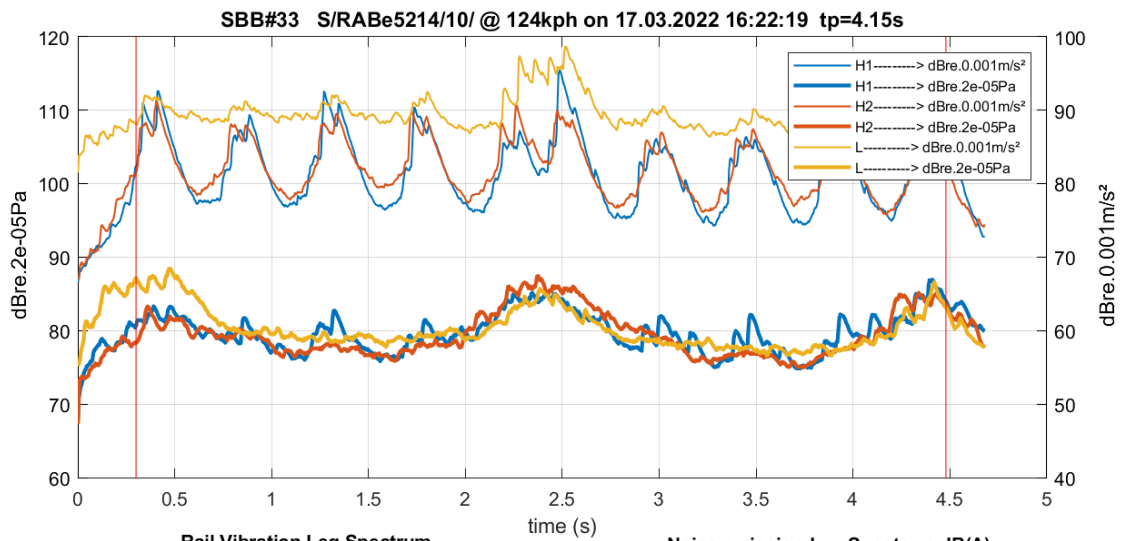


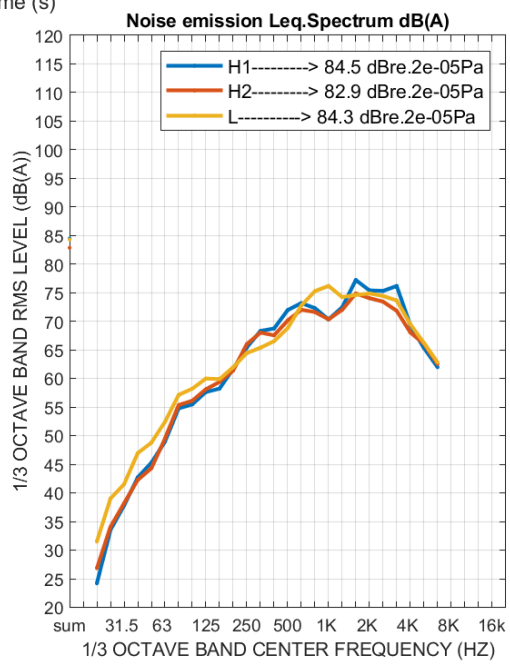
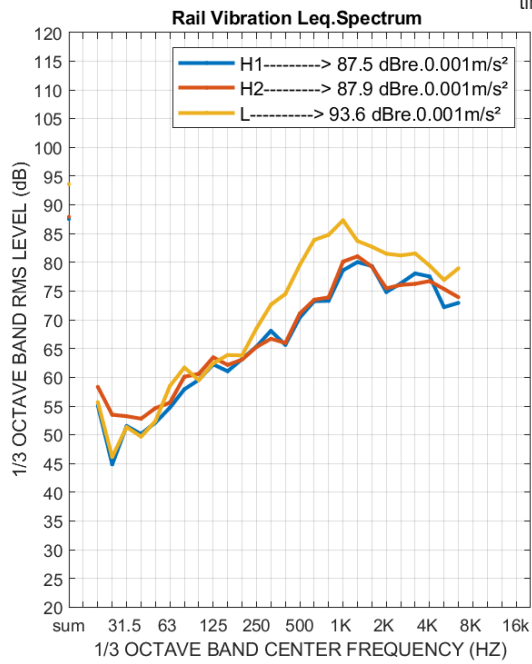
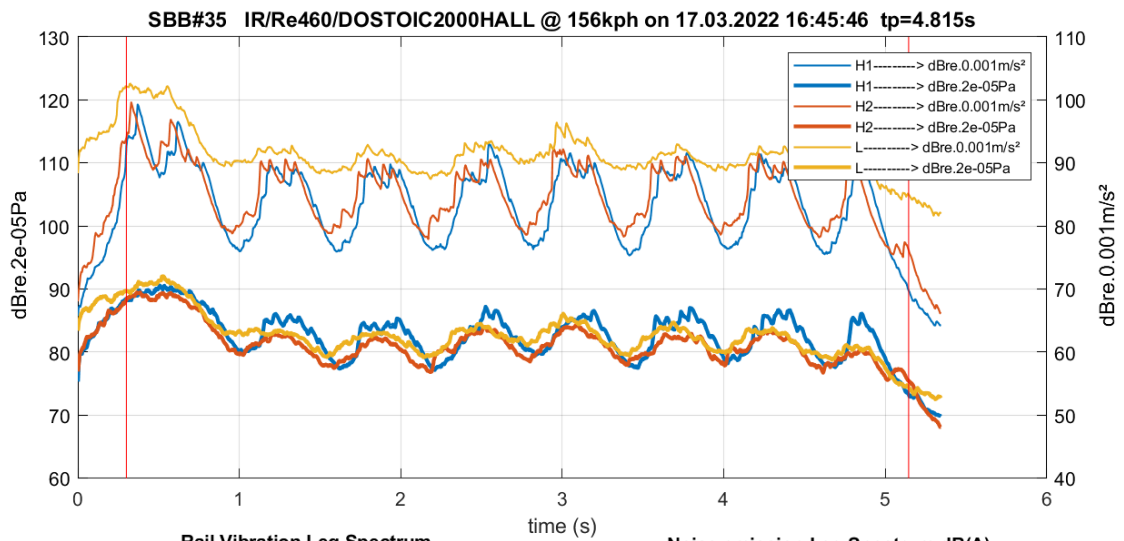
SBB#30 EC/RABe5018/24/ @ 161kph on 17.03.2022 15:49:12 tp=4.96s

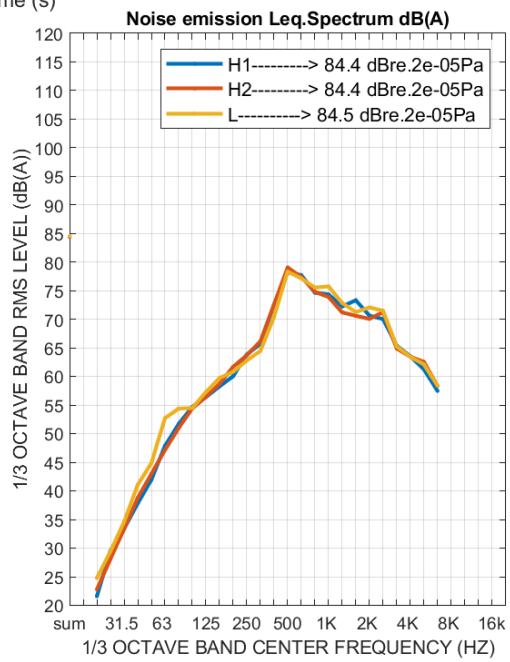
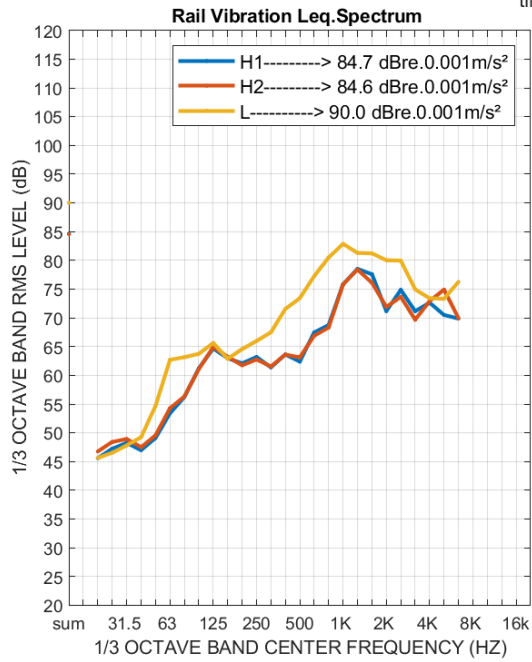
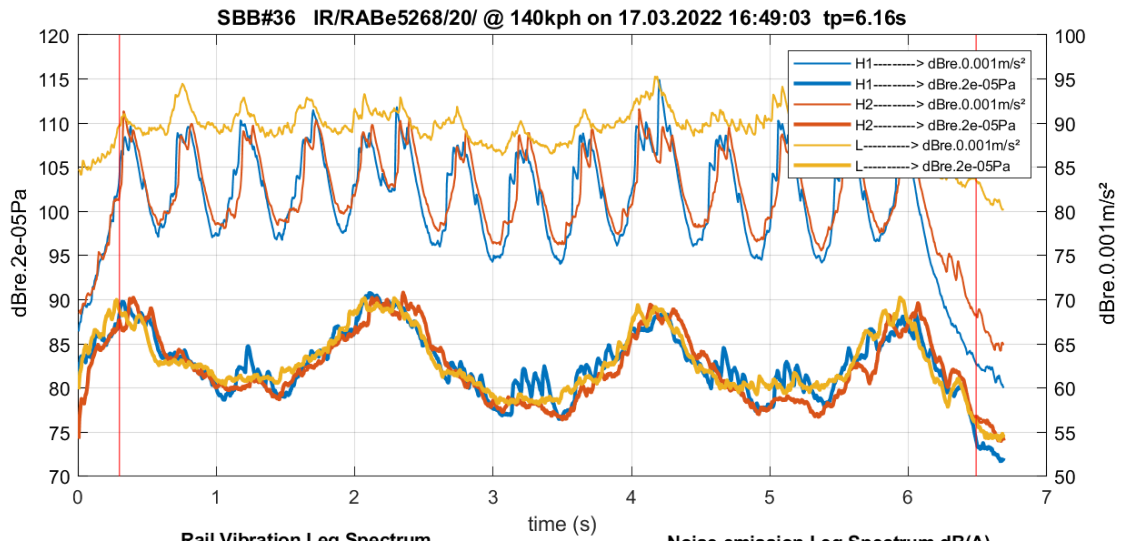


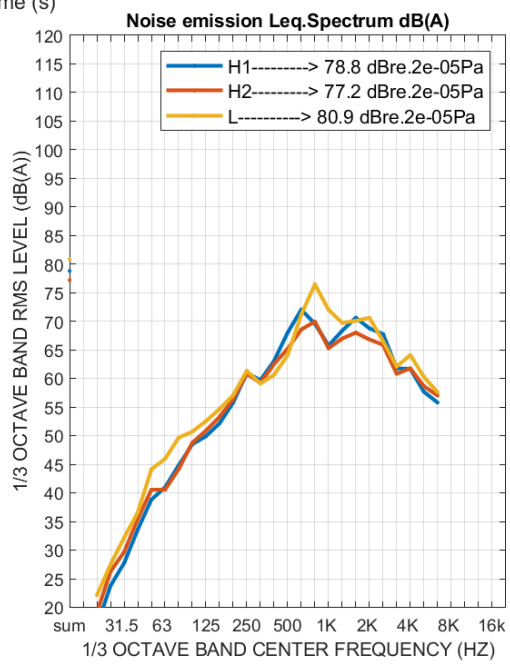
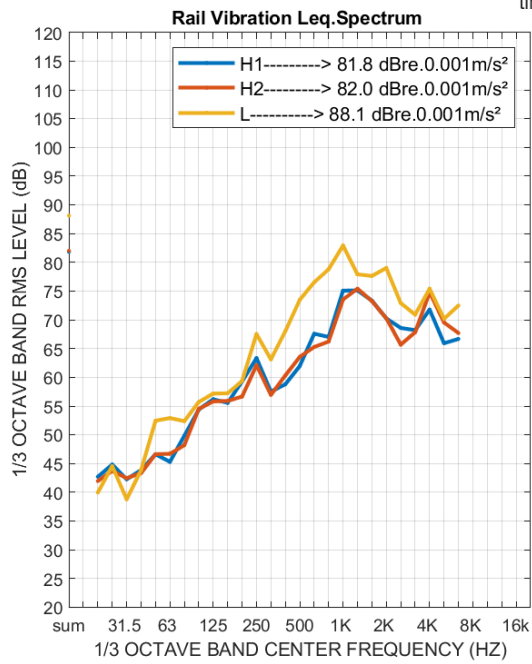
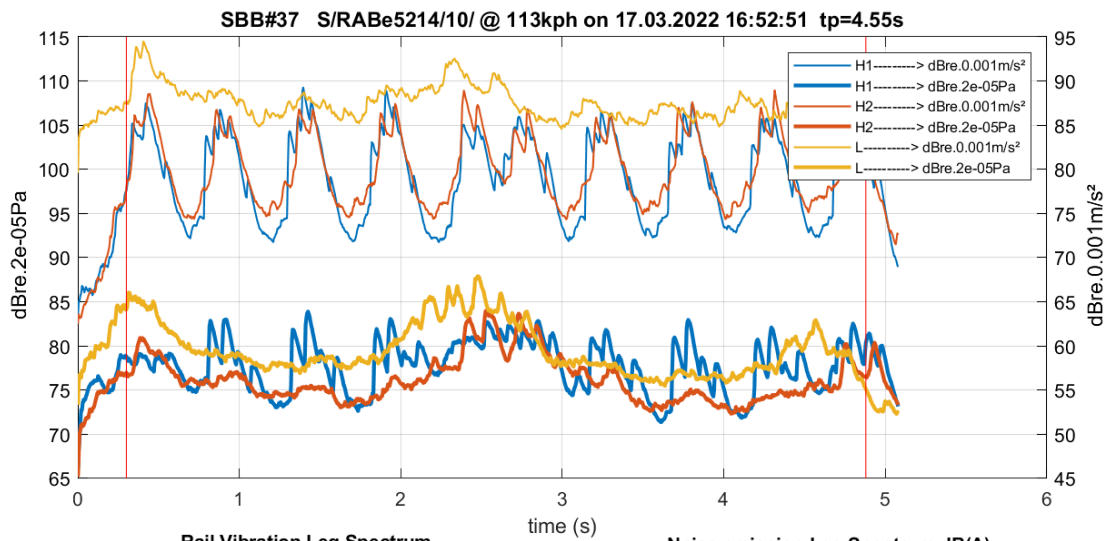


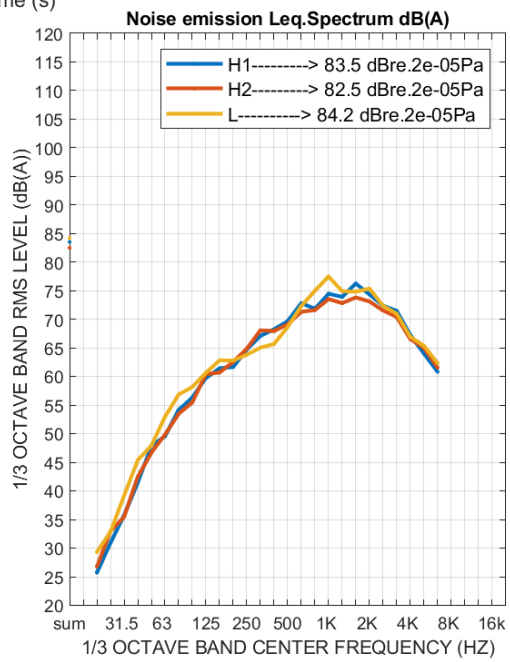
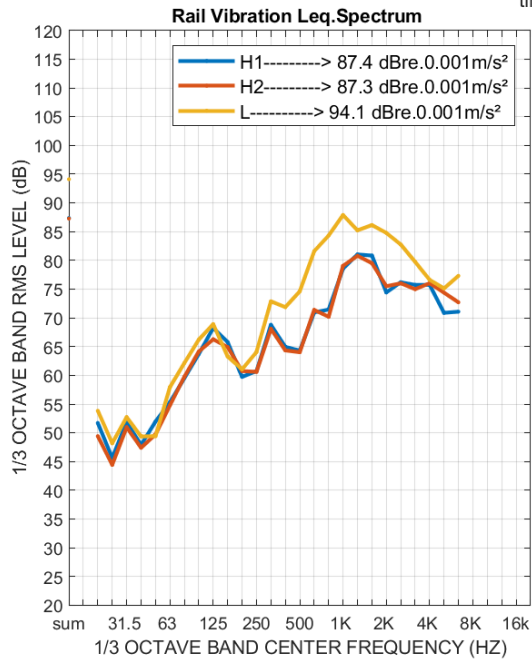
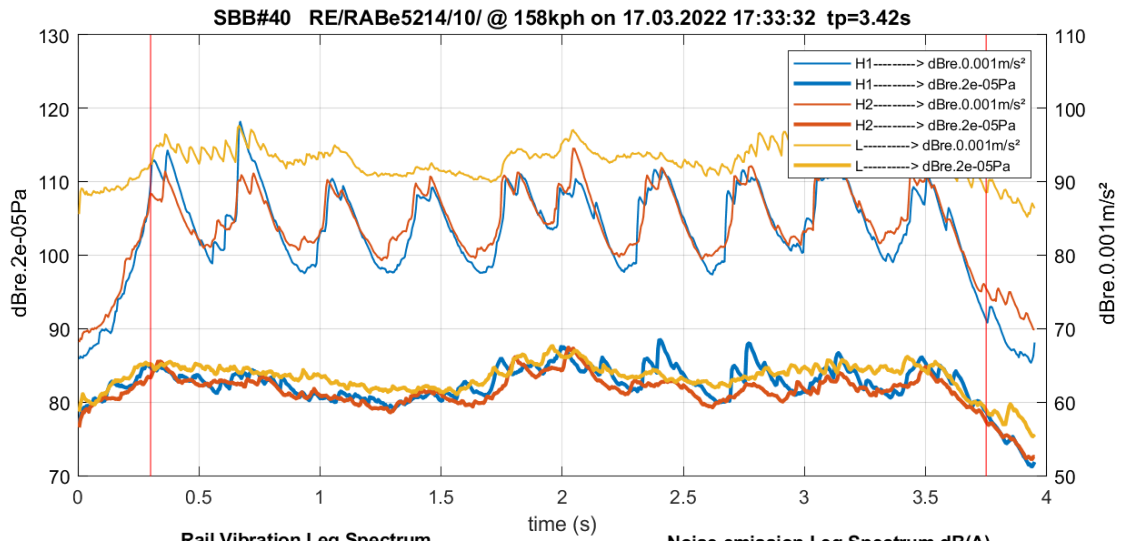


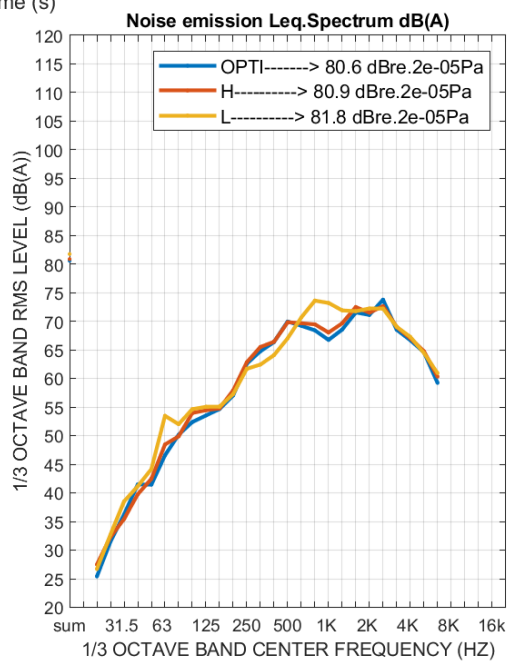
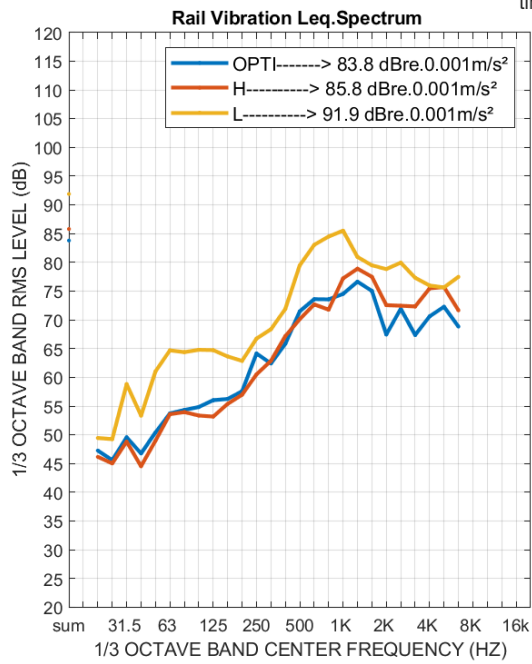
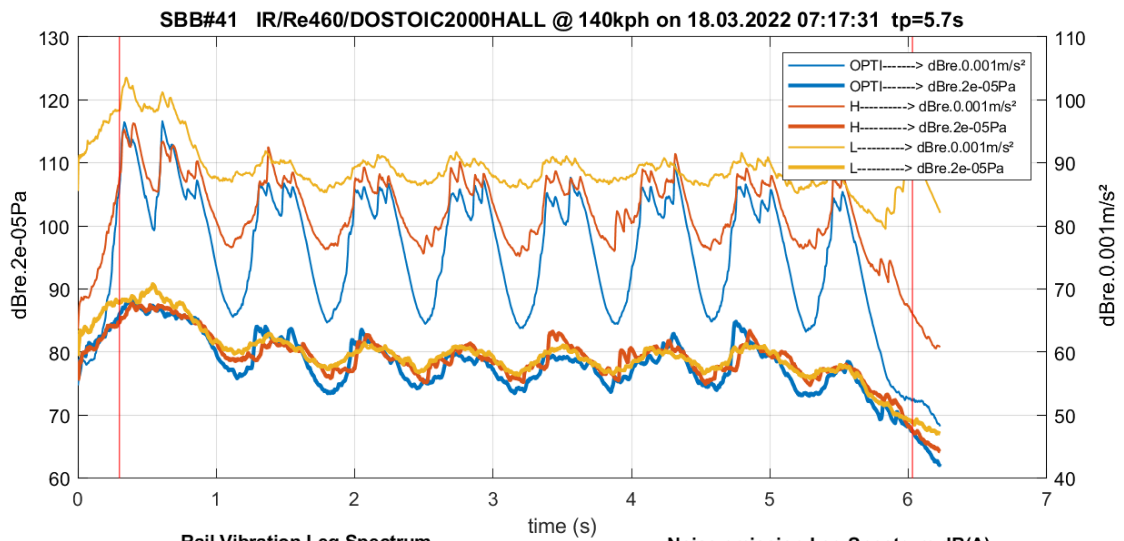


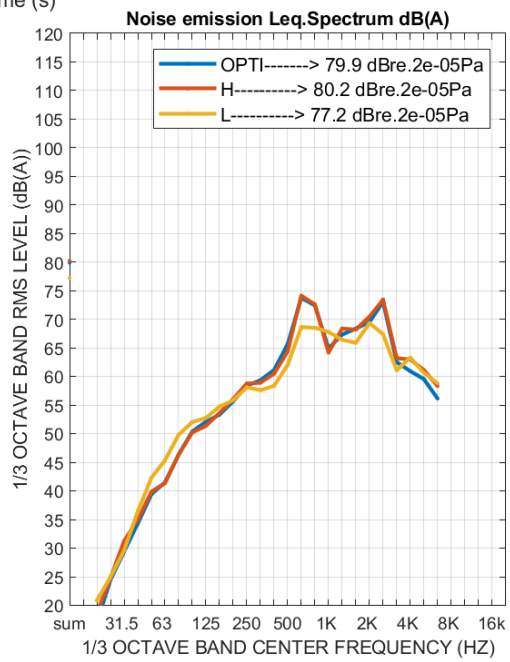
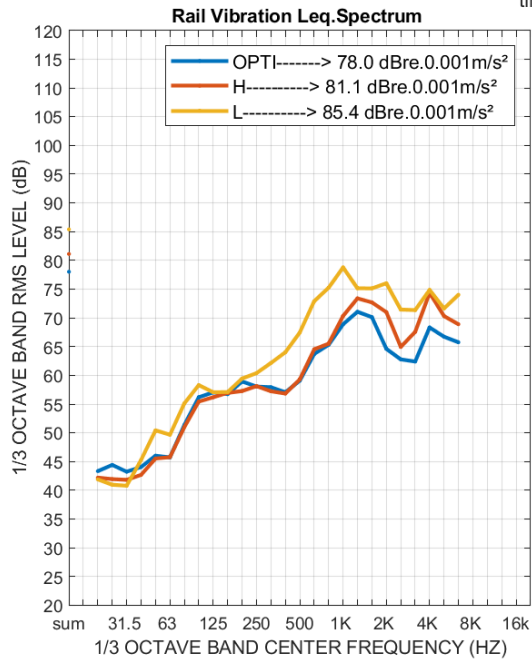
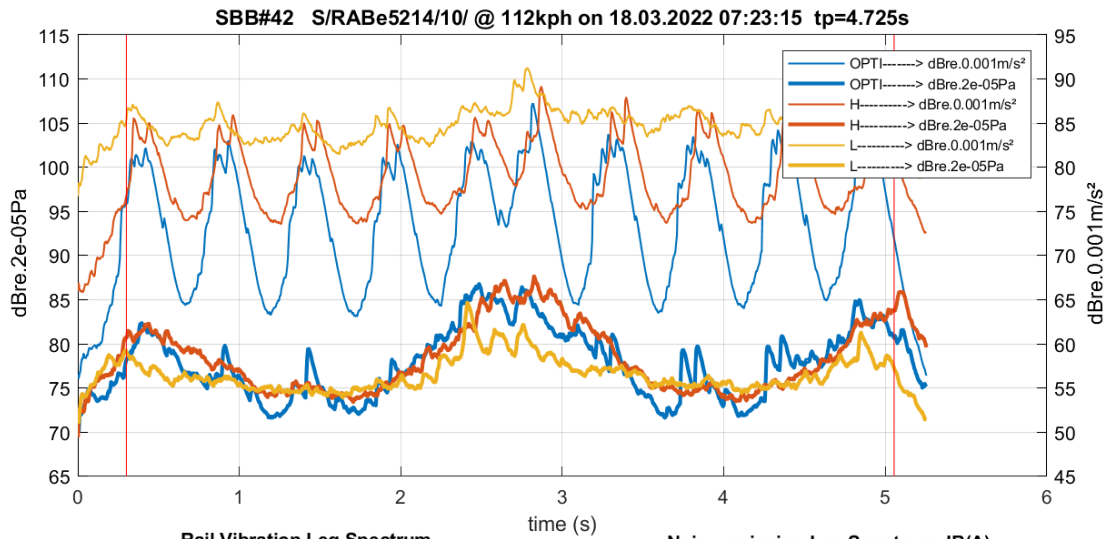


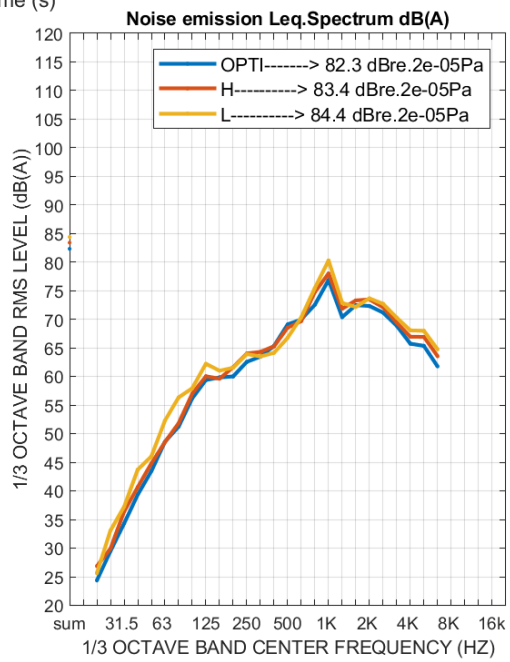
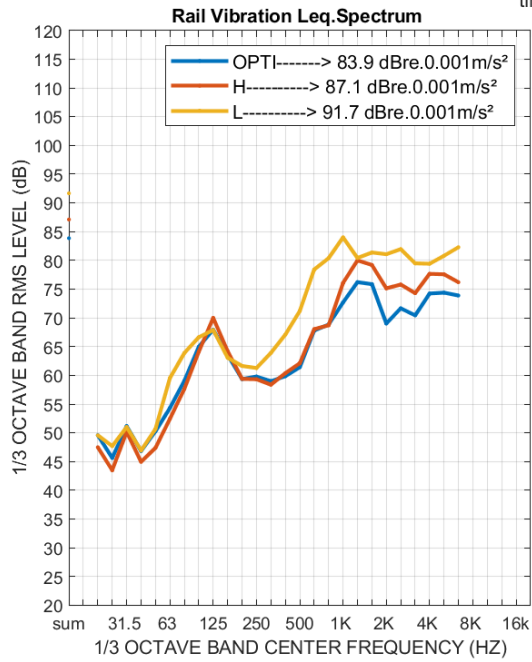
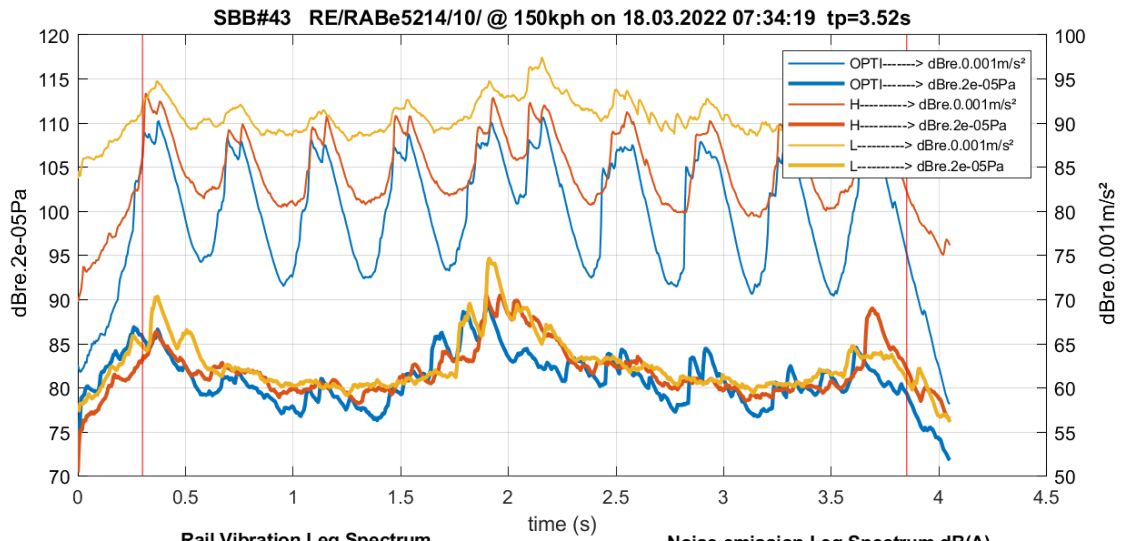


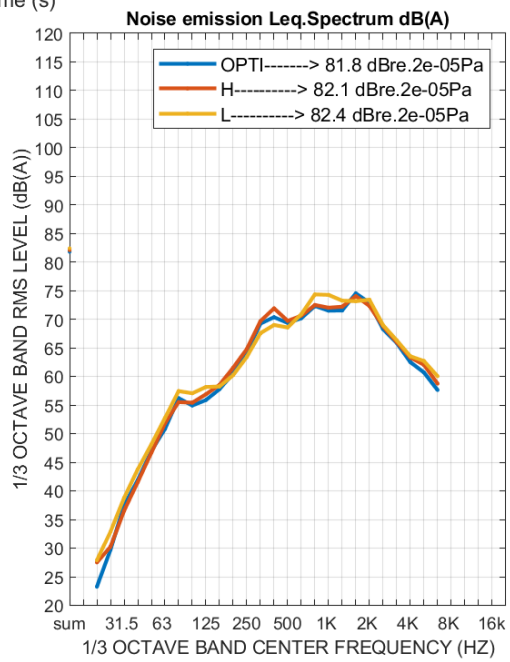
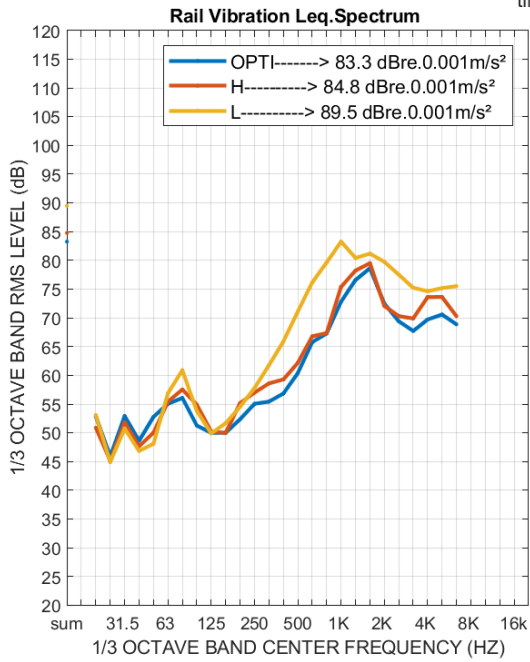
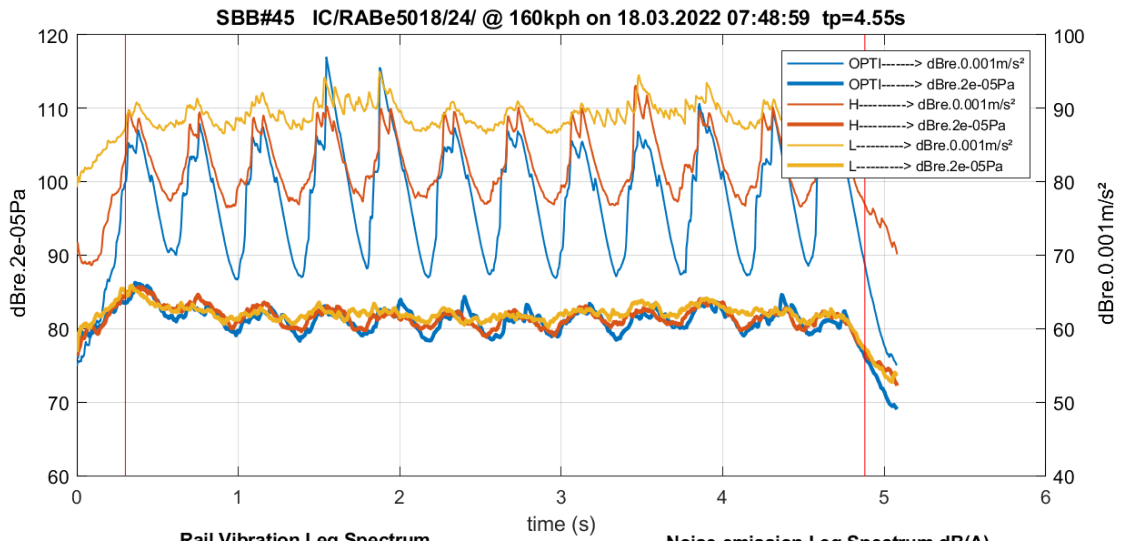


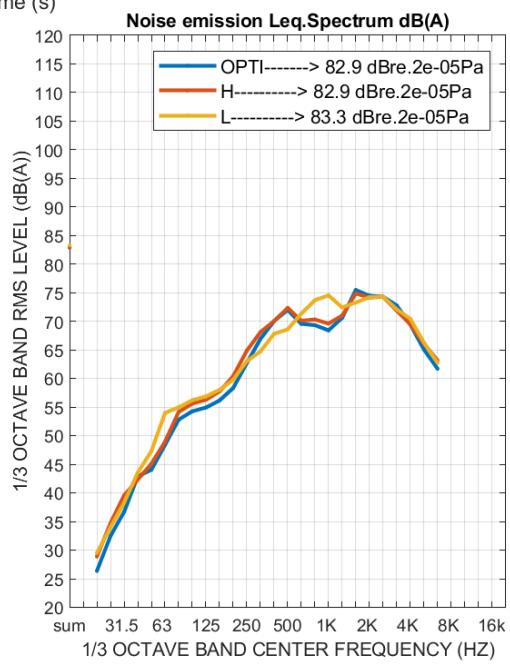
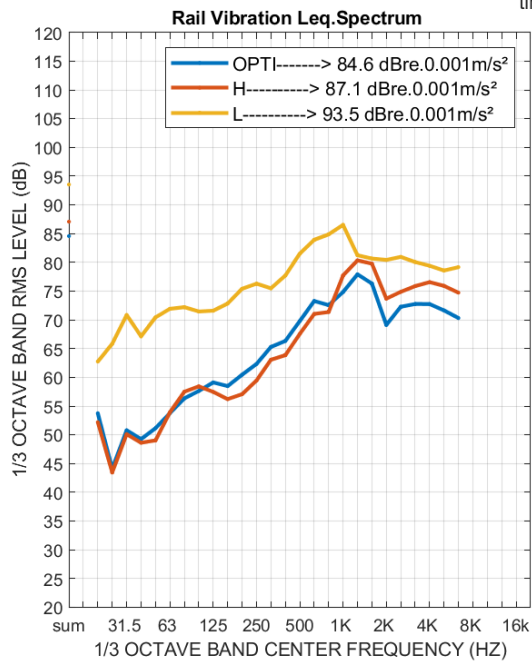
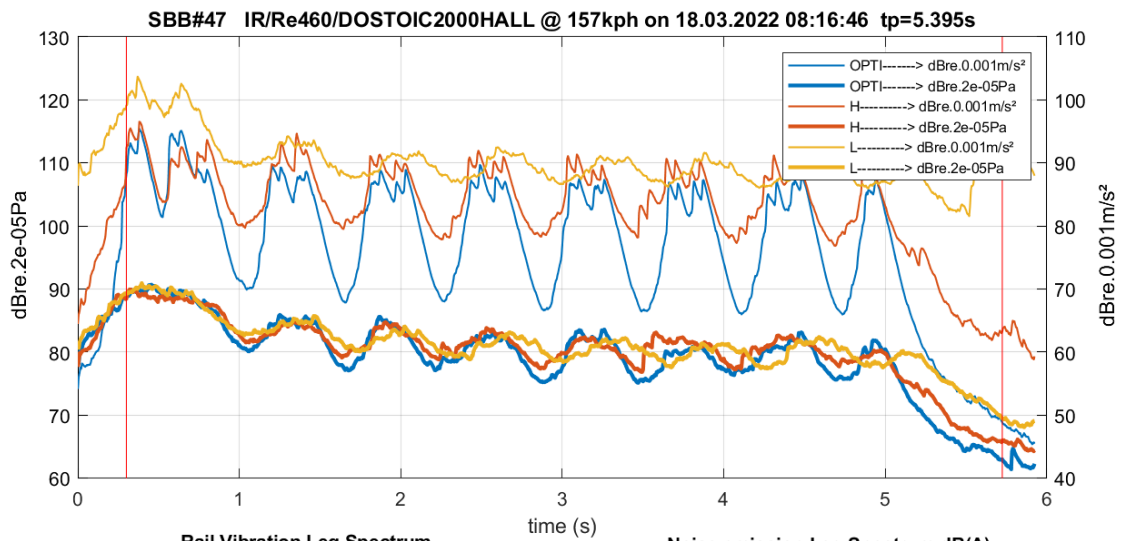


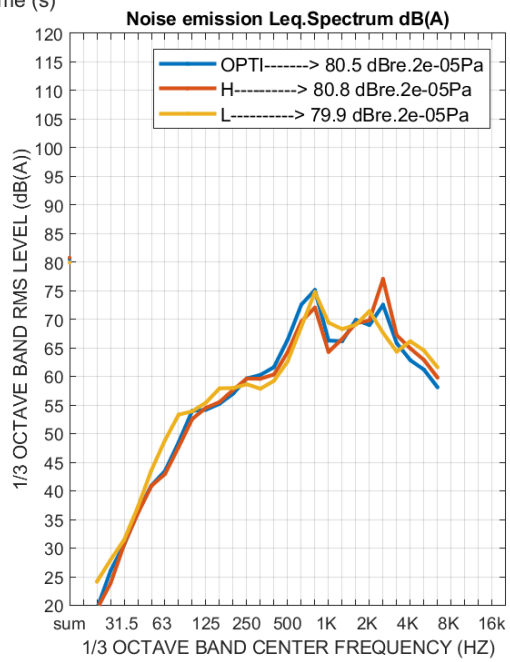
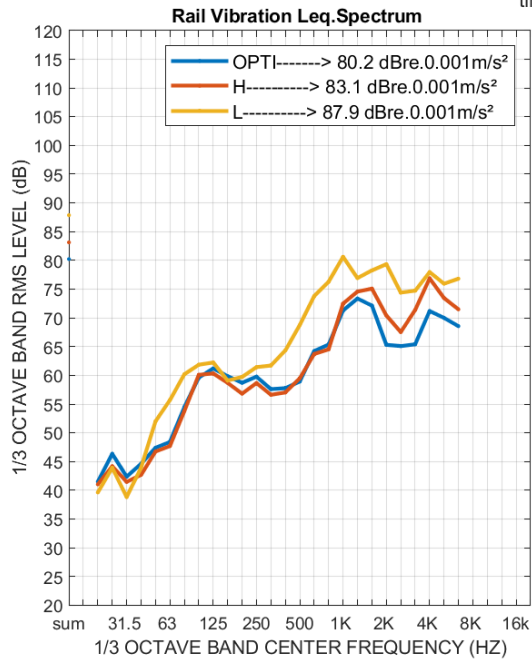
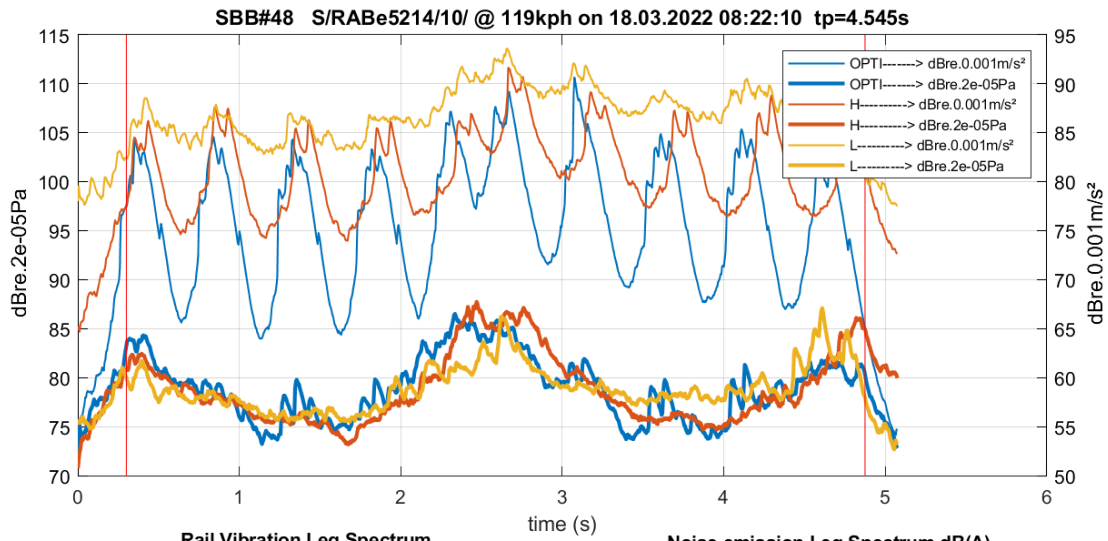


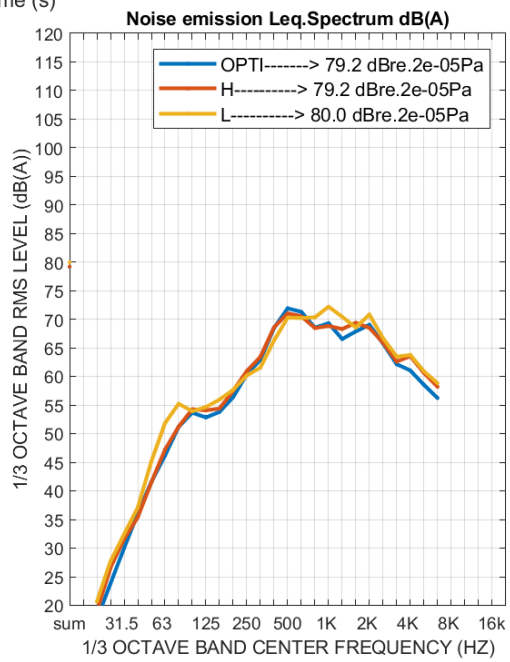
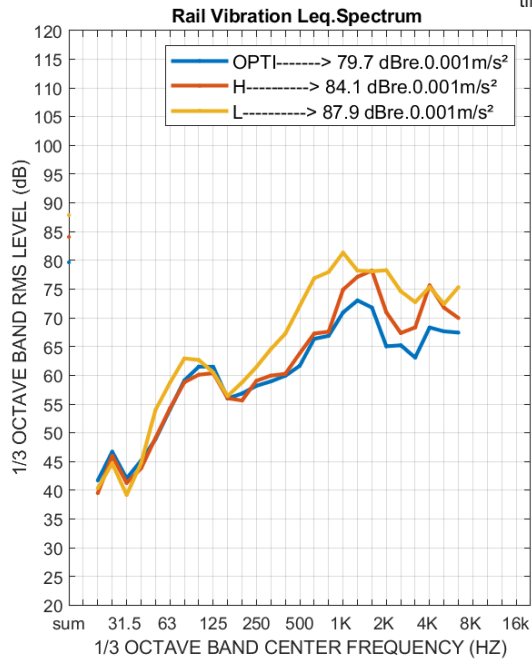
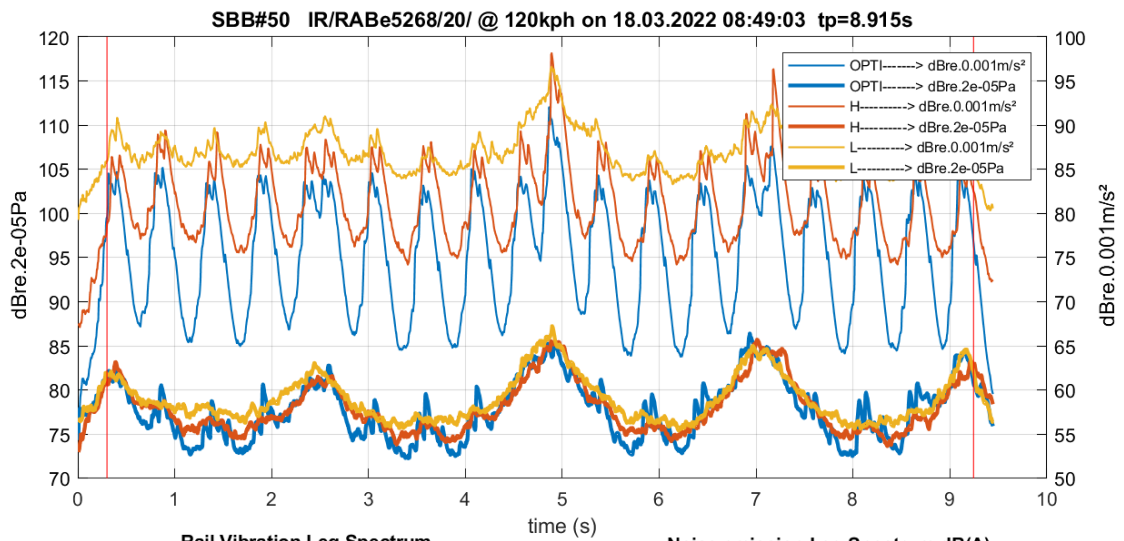


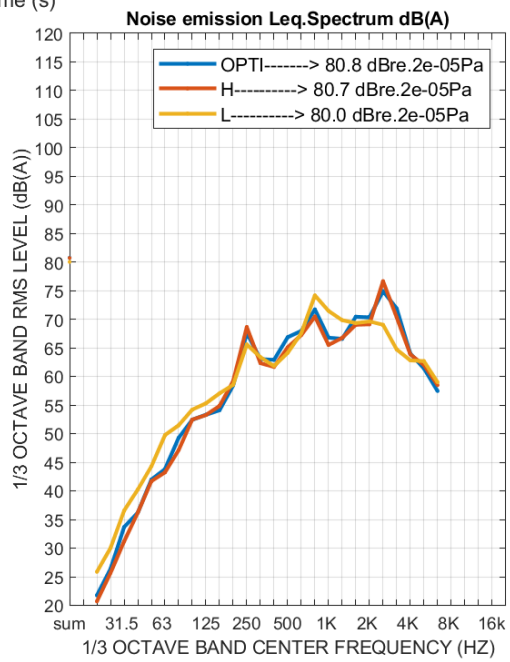
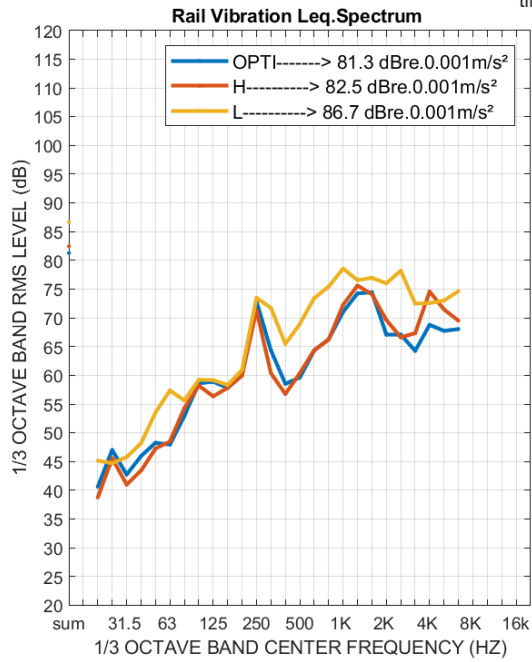
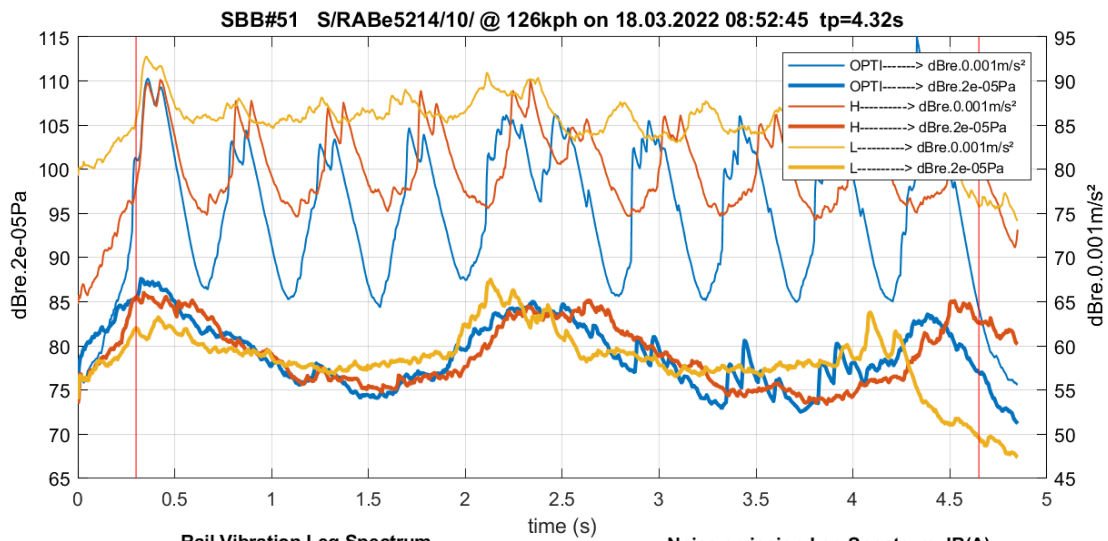




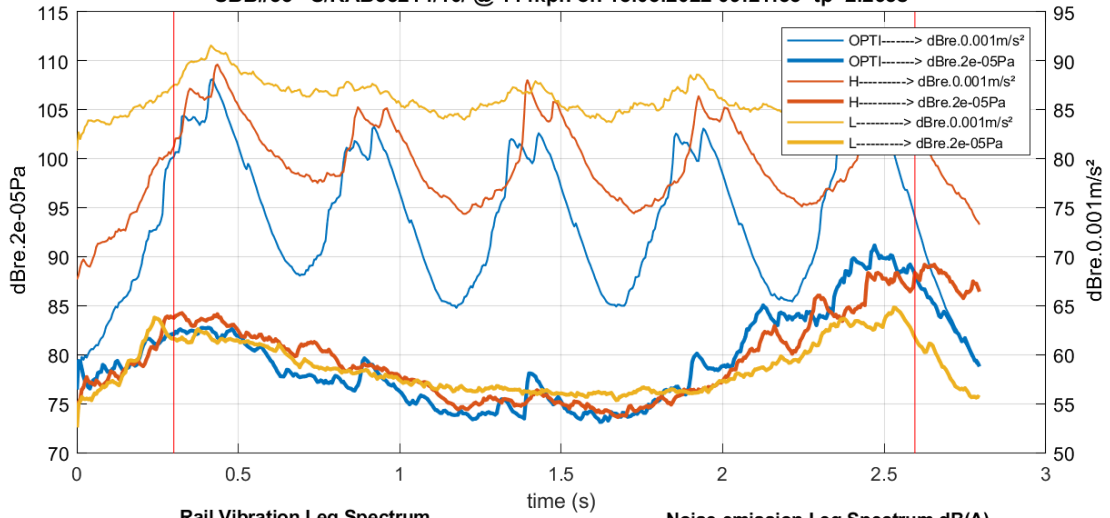




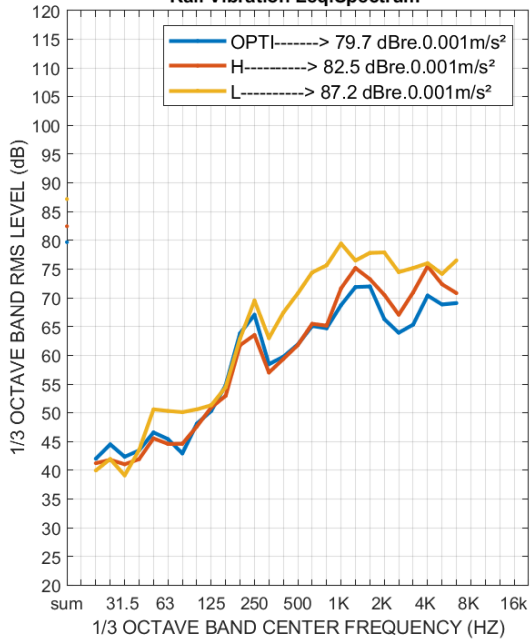




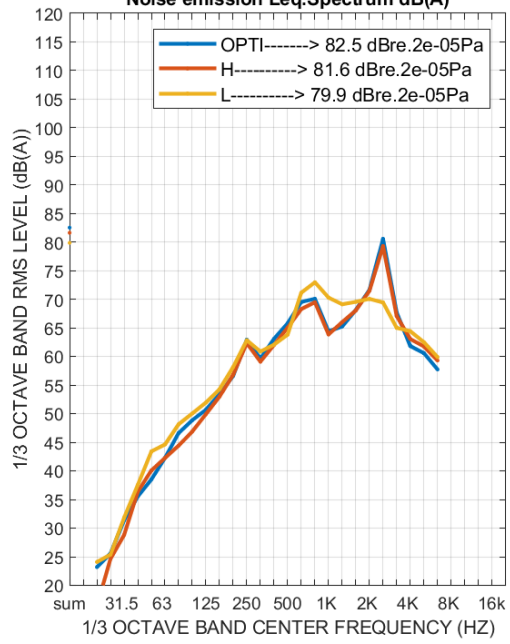
SBB#53 S/RABe5214/10/ @ 114kph on 18.03.2022 09:21:55 tp=2.265s

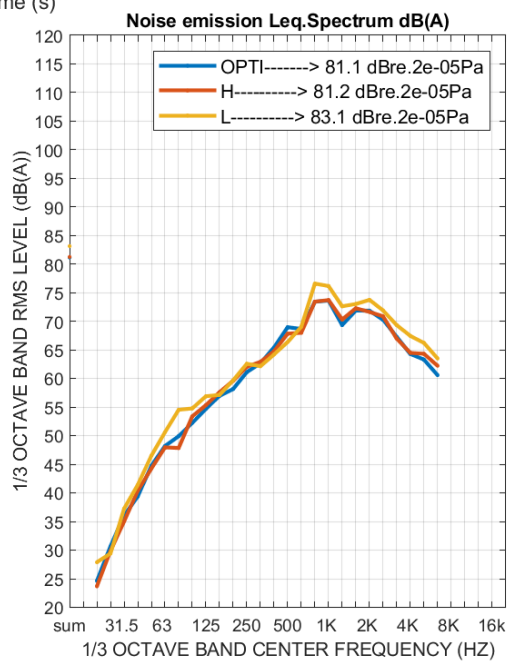
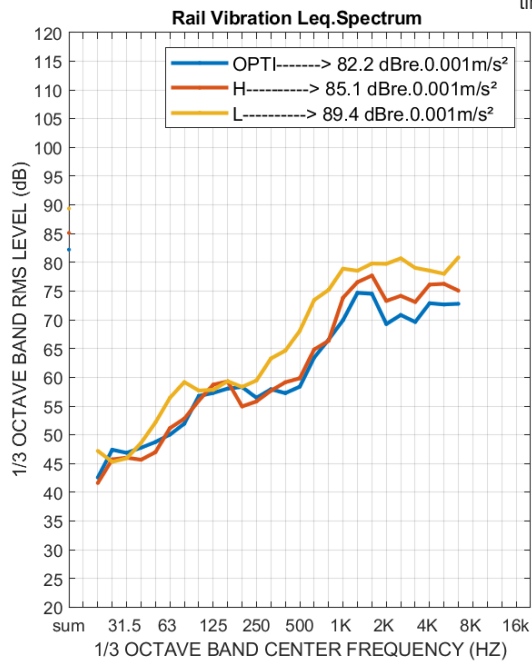
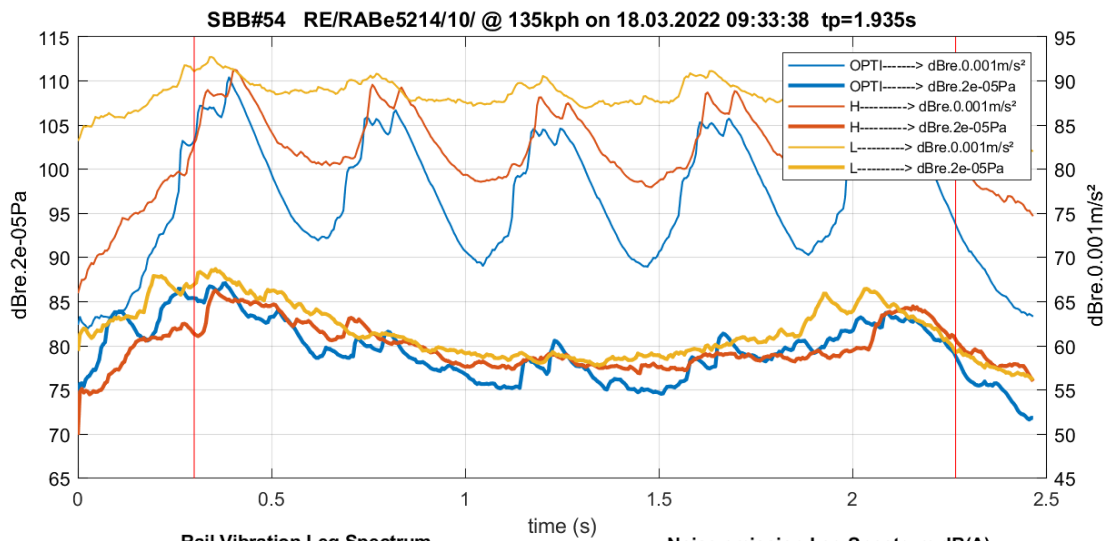


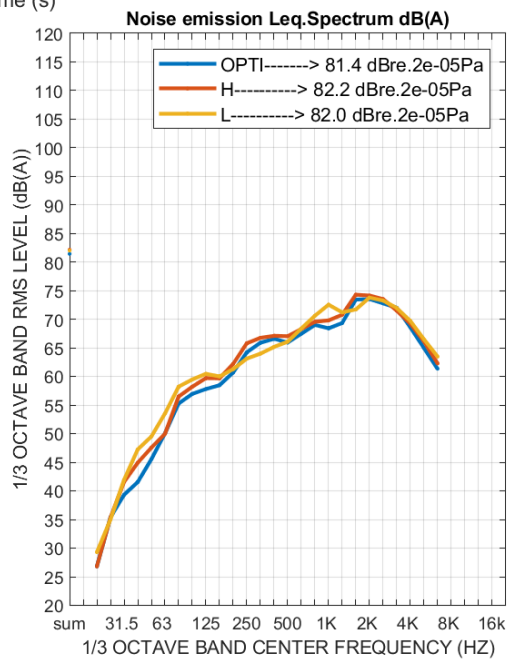
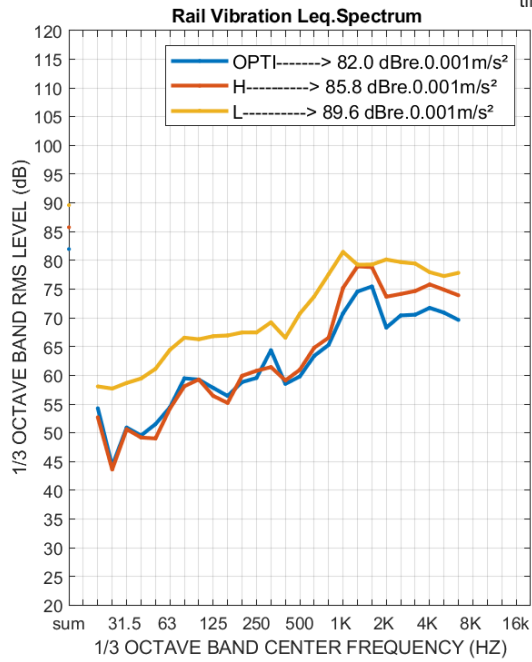
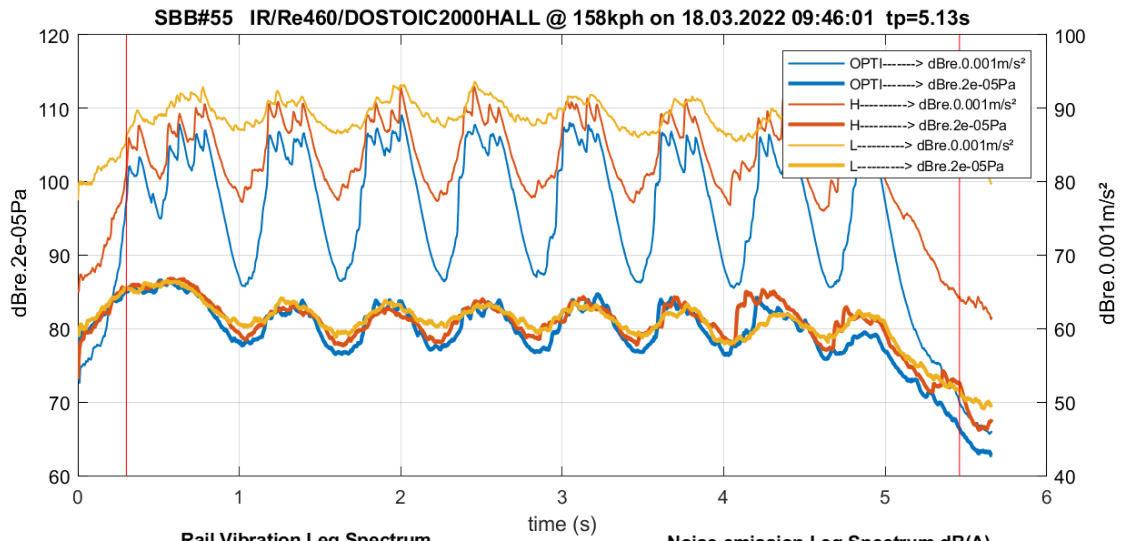
Rail Vibration Leq.Spectrum

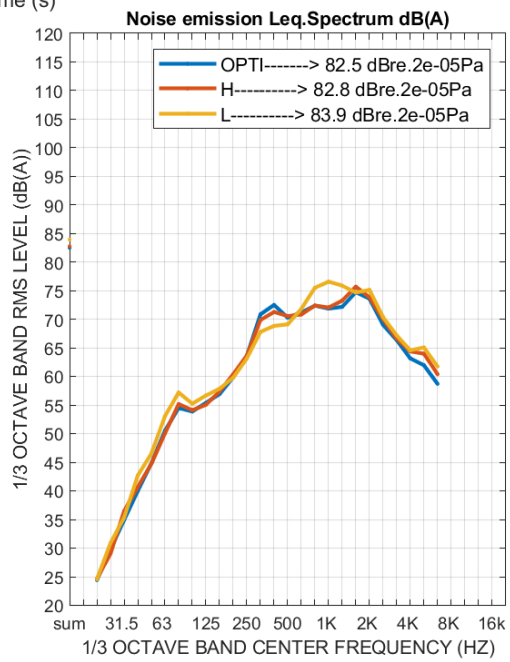
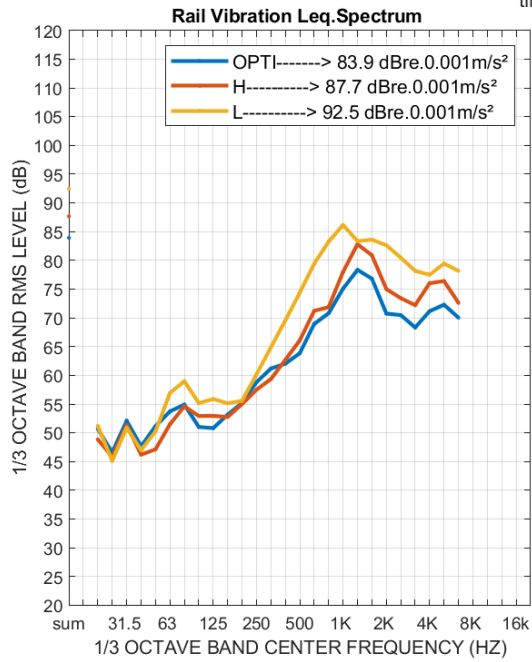
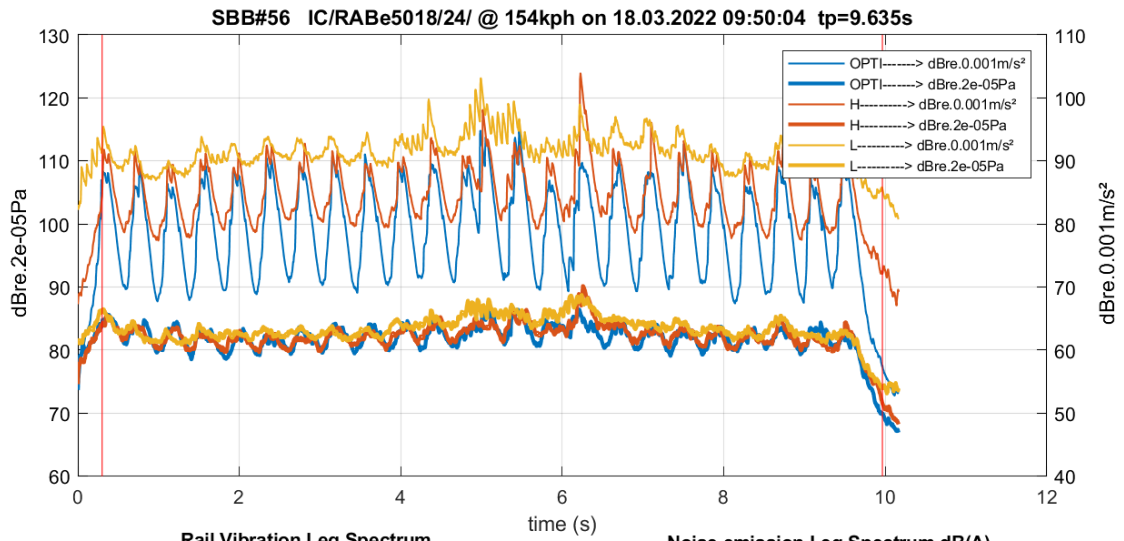


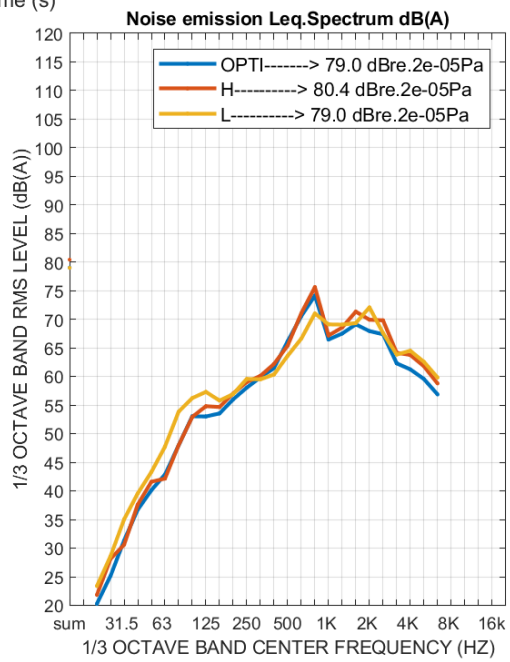
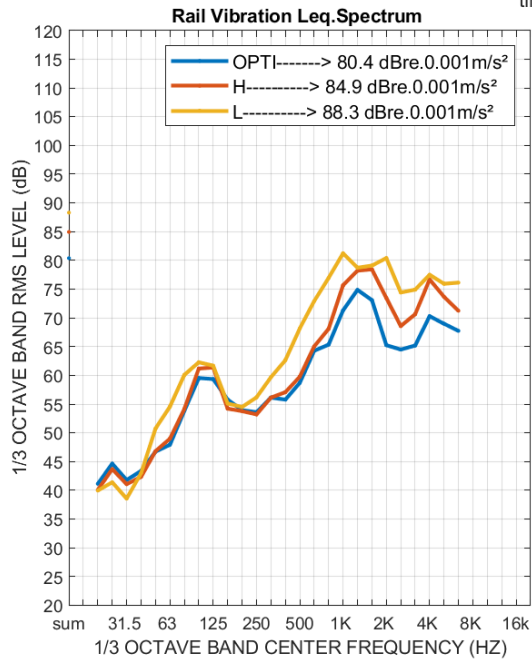
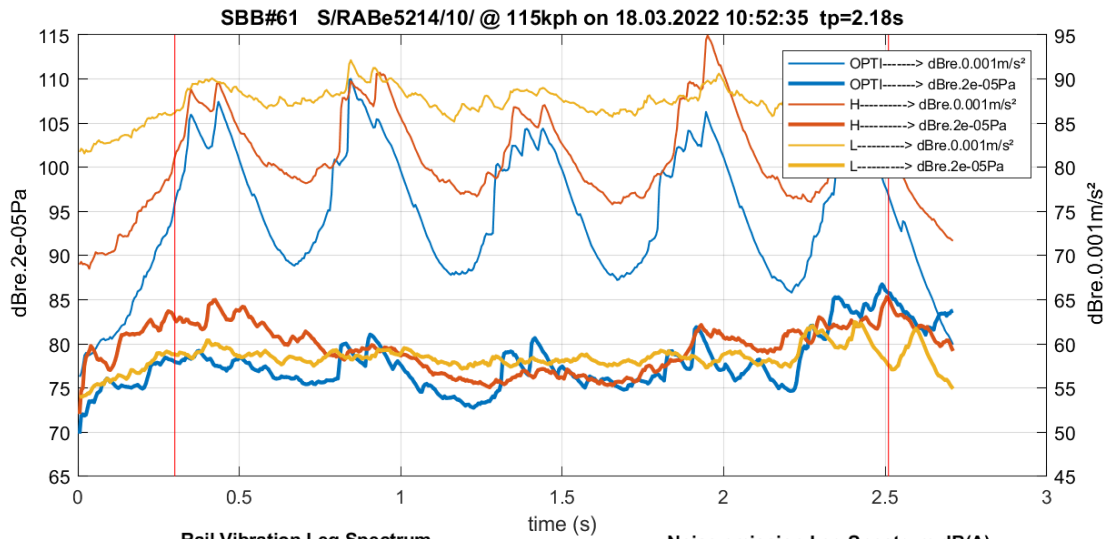
Noise emission Leq.Spectrum dB(A)

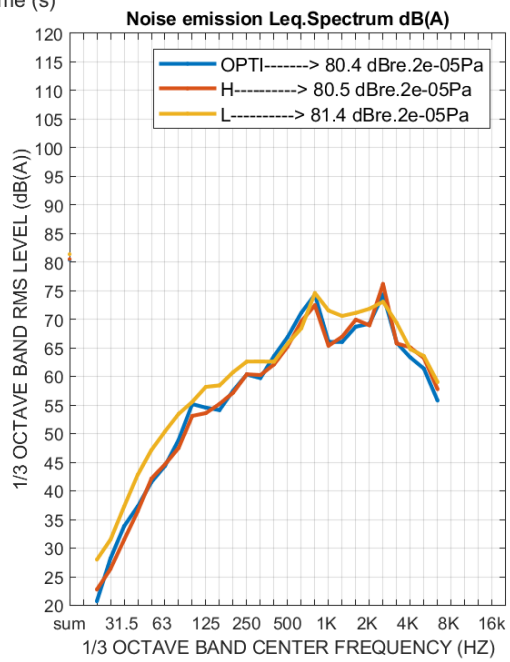
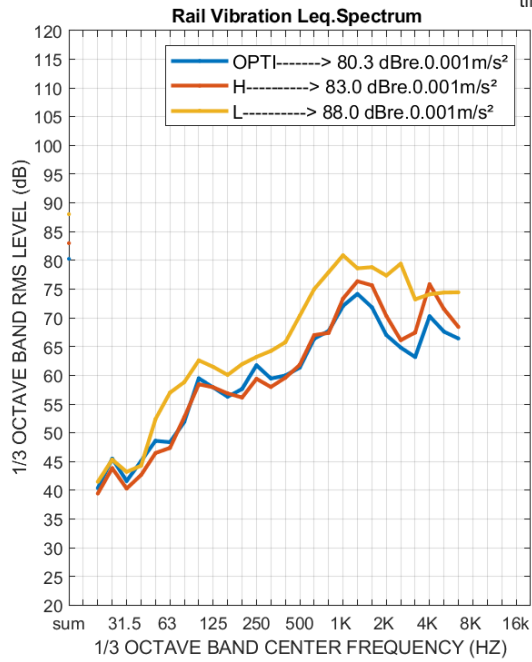
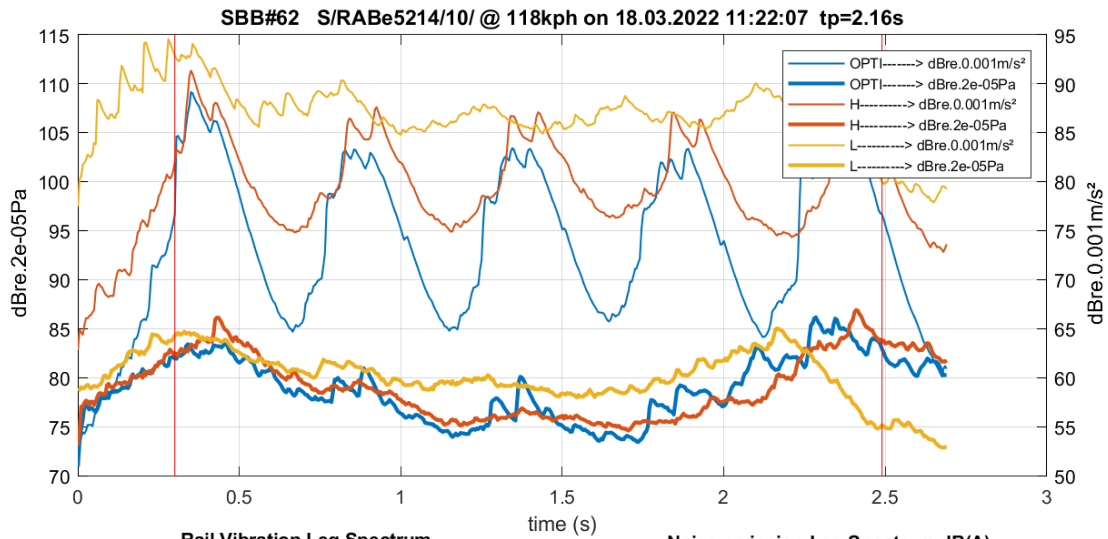


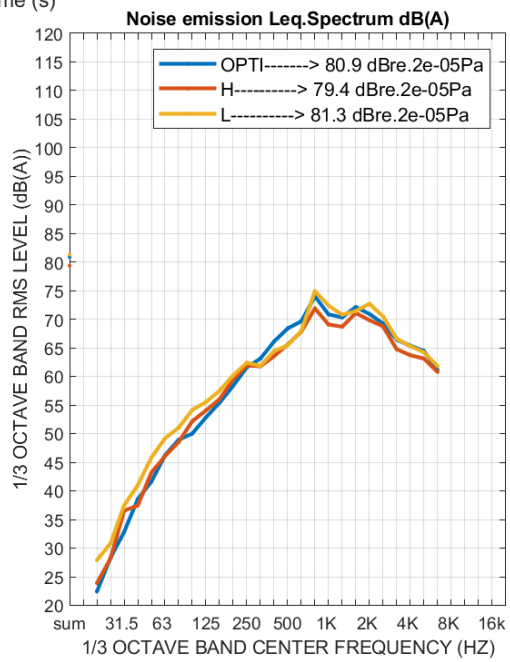
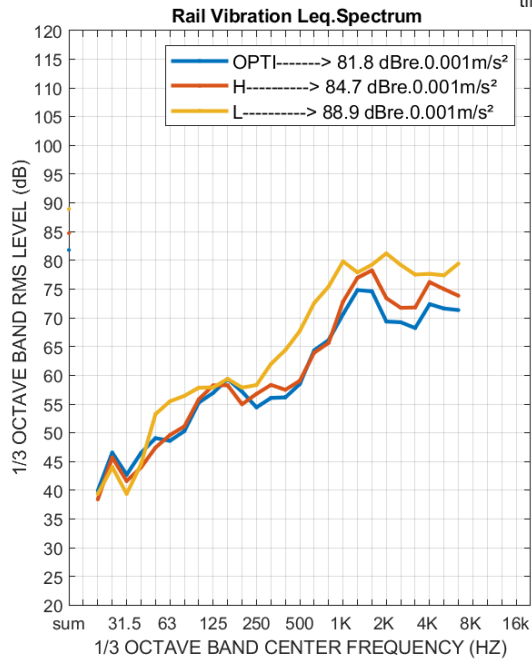
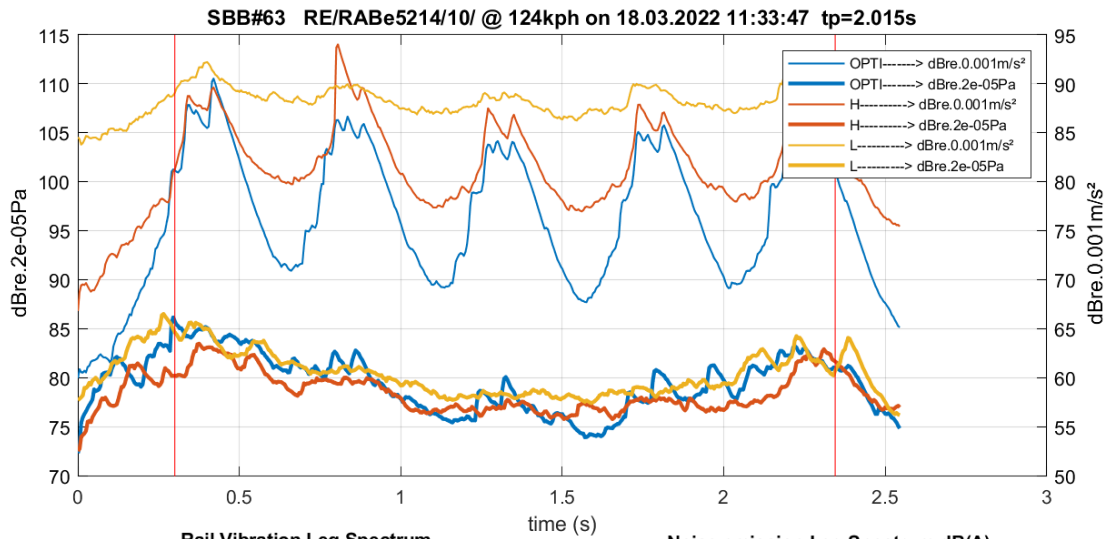


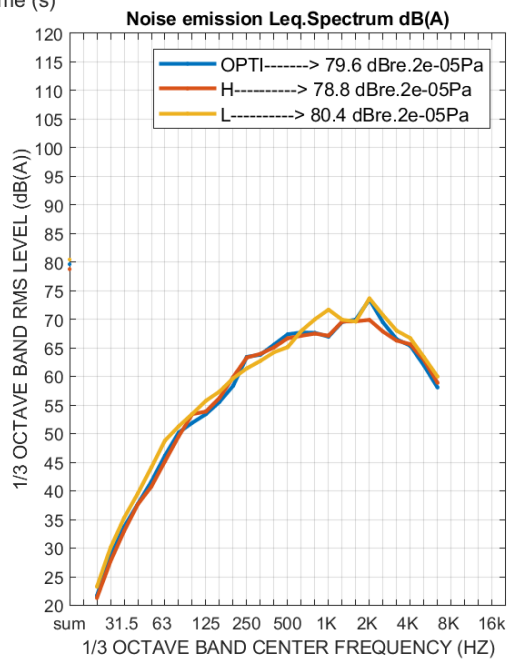
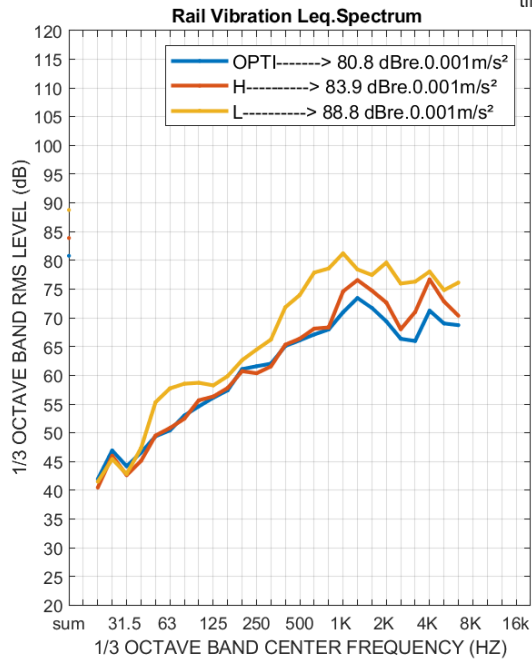
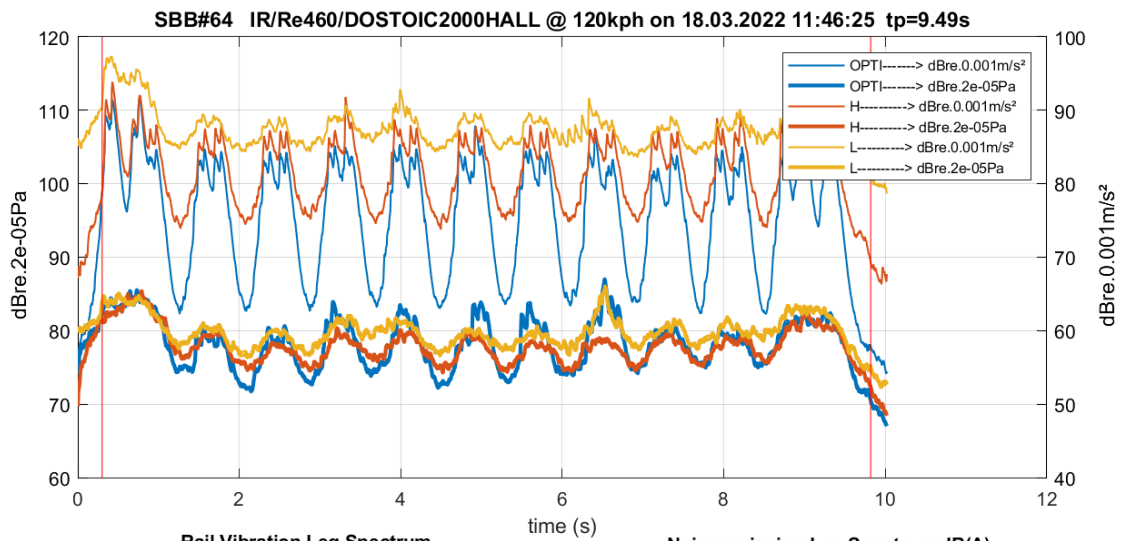




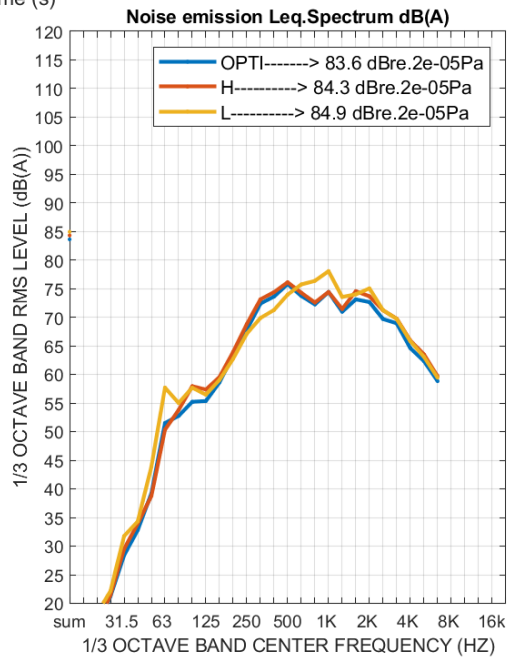
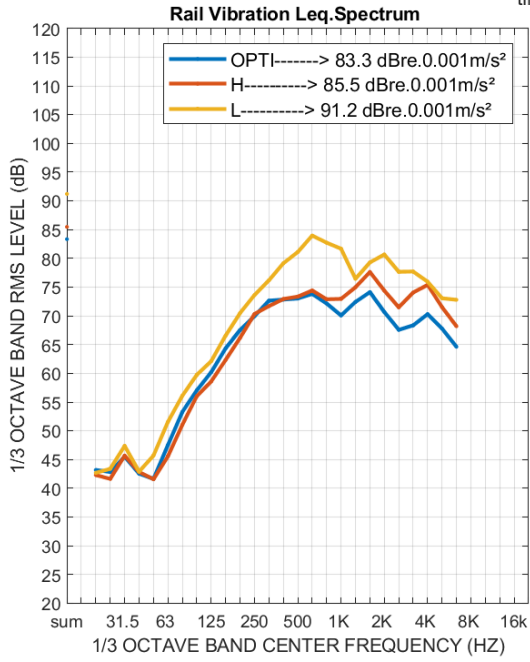
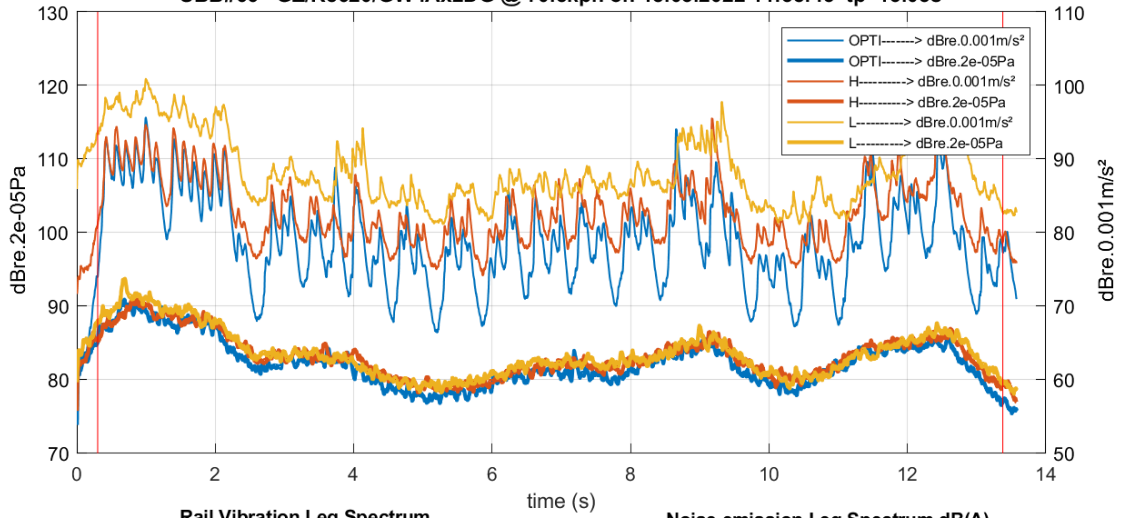








SBB#66 GZ/Re620/GW4Ax2DG @ 70.5kph on 18.03.2022 11:58:43 tp=13.05s



INTERNATIONAL UNION OF RAILWAYS
16, rue Jean Rey - 75015 Paris - France
Tel. +33 (0)1 44 49 20 20
Fax +33 (0)1 44 49 20 29
E-mail: info@uic.org

Published by: UIC Sustainability
Directors of publication: Pinar Yilmazer, Lorenzo Franzoni
Cover and layout: Ludovic Wattignies
Photo credits: DB AG, Infrabel
Printing: UIC

ISBN 978-2-7461-3312-9
Copyright deposit: October 2023

www.uic.org



#UICrail

